



FULL CATALOGUE EFFER LOADER CRANES

MAY 2023

INDEX

| MODEL / MODELLO | PAGE / PAGINA | | |
|-----------------|---------------|-----------------------|----|
| | | 685 | 32 |
| 35 | 3 | iQ.950 HP | 34 |
| 65 D | 4 | 955 | 36 |
| 80 D | 6 | E. 1000 | 38 |
| 105 D | 8 | iQ.1200 HP | 40 |
| 125 HP | 10 | 1405 | 42 |
| 145 HP | 12 | 1750 | 44 |
| 175.2 | 14 | 1750 L | 46 |
| iX.195 HP | 16 | 1855 | 48 |
| 215 | 18 | 1855 L | 50 |
| 265 | 20 | 2055 | 52 |
| 315 | 22 | iQ.2255 HP | 54 |
| iX.355 HP | 24 | iQ.2655 HP | 56 |
| 395 | 26 | LEGENDA KEY / LEGENDA | 58 |
| 525 | 28 | | |
| iX.550 HP | 30 | | |

Selected models are available only for certain markets, contact your local EFFER dealer to find out more.

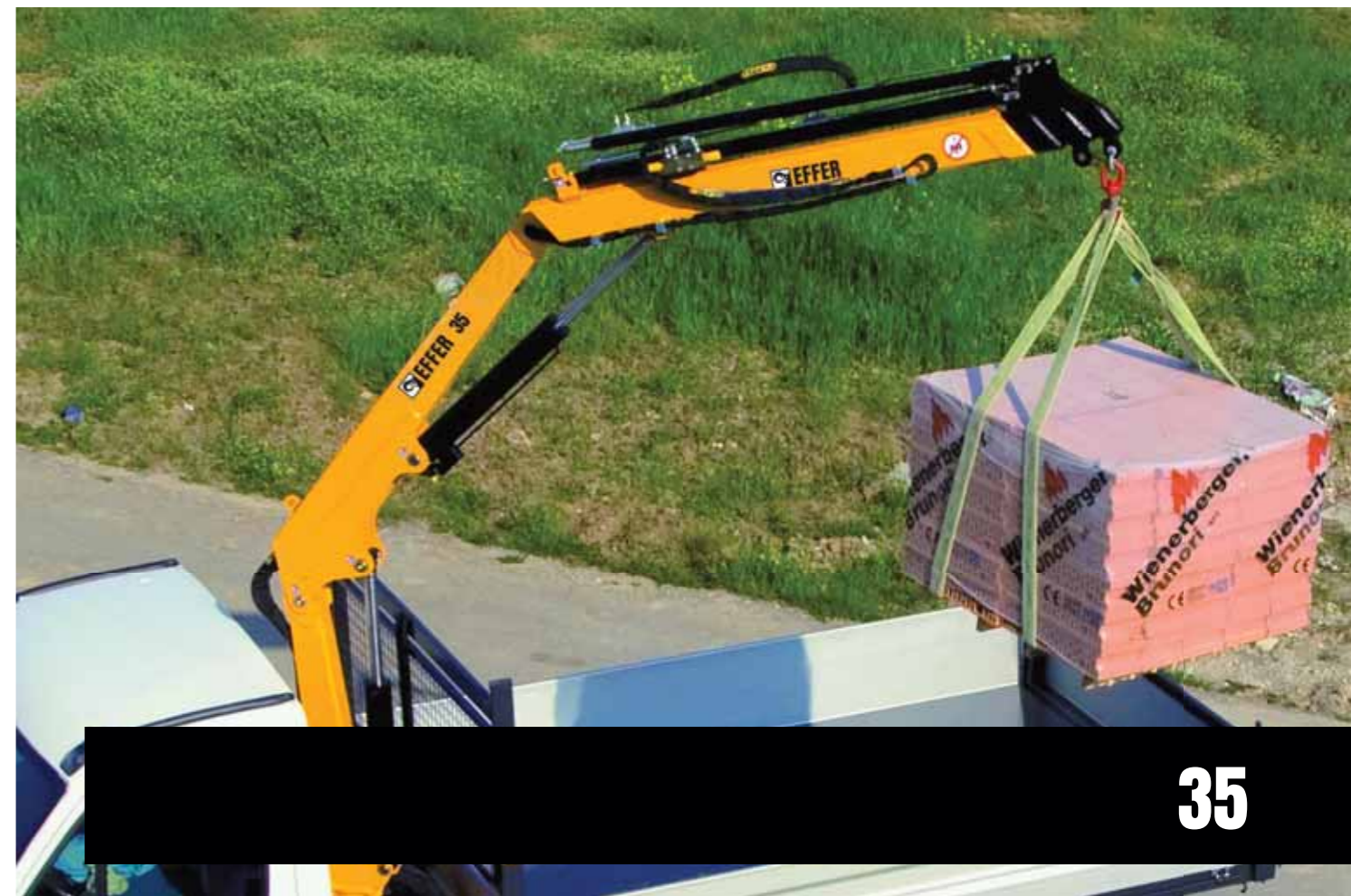
Certi modelli sono disponibili solo per mercati selezionati, contattate il vostro concessionario EFFER per avere maggiori dettagli.

Certains modèles ne sont disponibles que pour des marchés identifiés, contactez votre revendeur EFFER local pour en savoir plus.

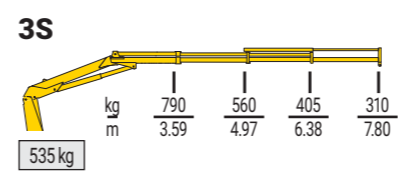
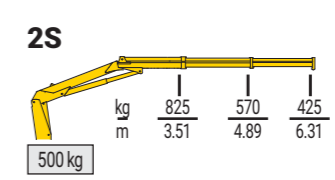
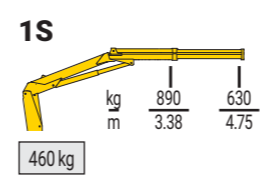
Los modelos seleccionados están disponibles solo para ciertos mercados; comuníquese con su distribuidor EFFER local para obtener más información.

Valda modeller är endast tillgängliga för vissa marknader. Kontakta din lokala EFFER-återförsäljare för mer information.

Ausgewählte Modelle sind nur für bestimmte Märkte erhältlich. Wenden Sie sich an Ihren lokalen EFFER-Händler, um mehr zu erfahren.



35



standard



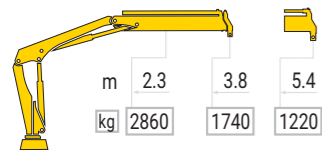
optional



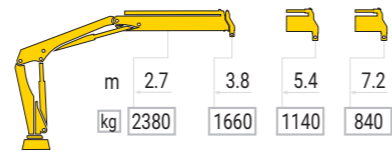
| MODEL | | | | | | | |
|-------|------|-----|------|------|-----|------|-----|
| | txm | (°) | mm | mm | mm | mm | t |
| 1S | 3.01 | 360 | 1705 | 1990 | 475 | 3120 | 3.5 |
| 2S | 2.89 | 360 | 1705 | 1990 | 475 | 3120 | 3.5 |
| 3S | 2.84 | 360 | 1705 | 2040 | 475 | 3120 | 3.5 |



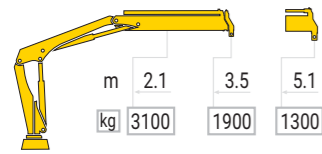
B-1



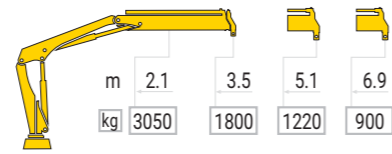
B-2



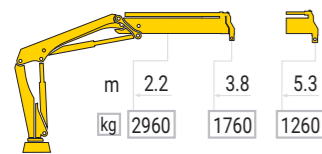
BS-1



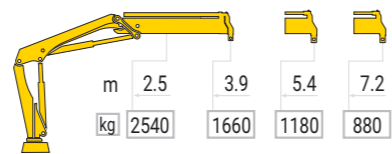
BS-2



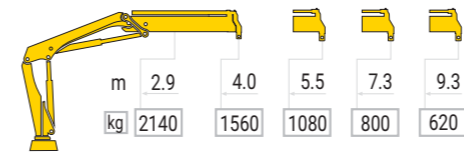
D-1



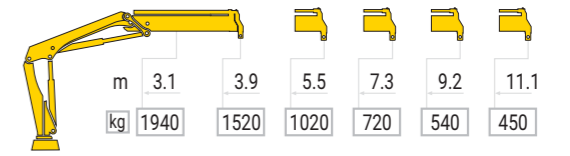
D-2



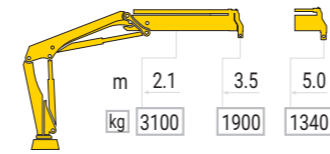
D-3



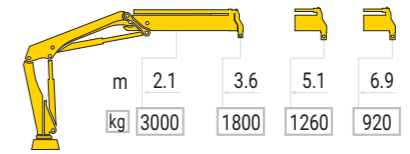
D-4



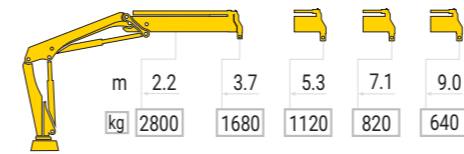
DS-1



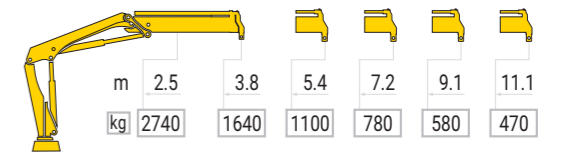
DS-2



DS-3



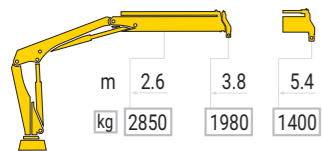
DS-4



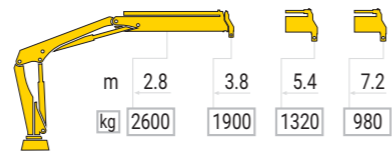


80 D

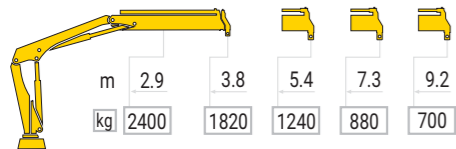
B-1



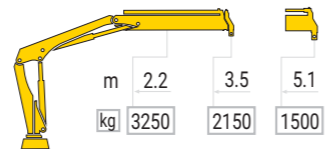
B-2



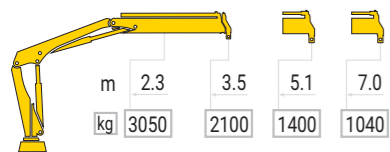
B-3



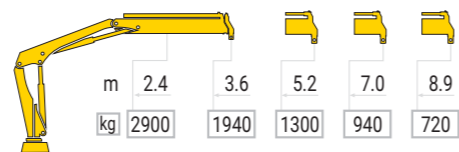
BS-1



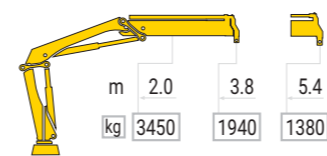
BS-2



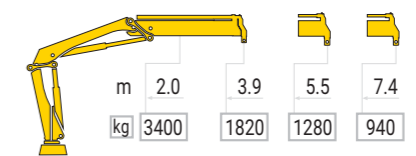
BS-3



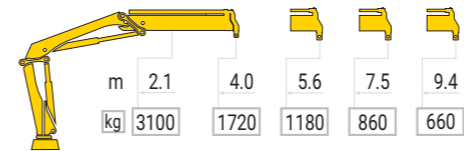
E-1



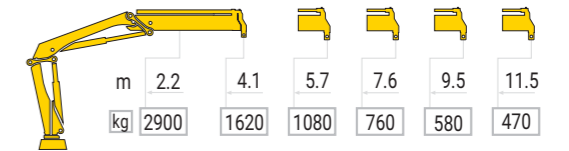
E-2



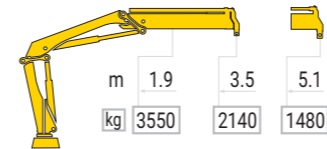
E-3



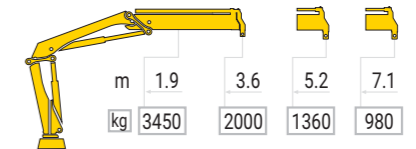
E-4



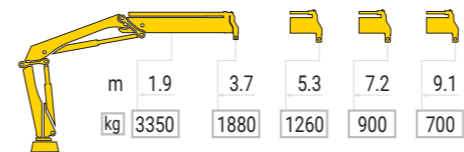
ES-1



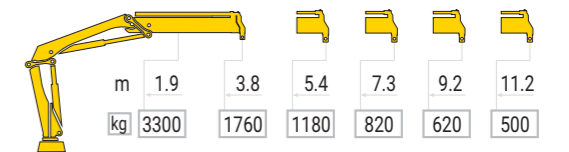
ES-2



ES-3

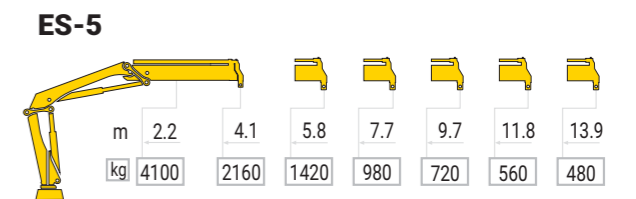
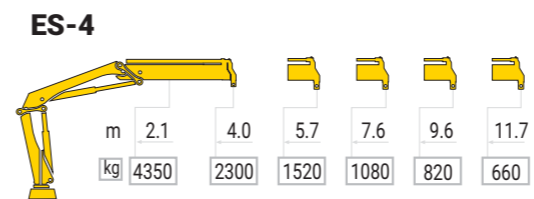
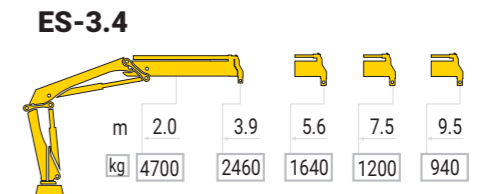
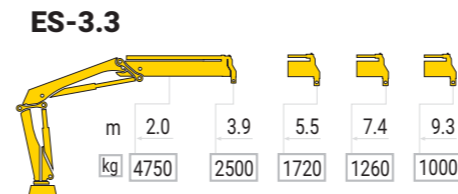
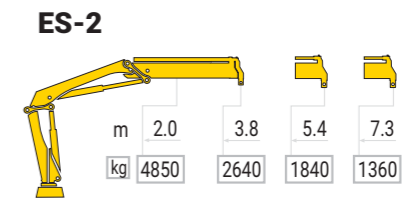
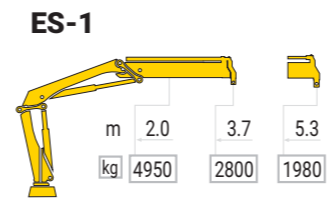
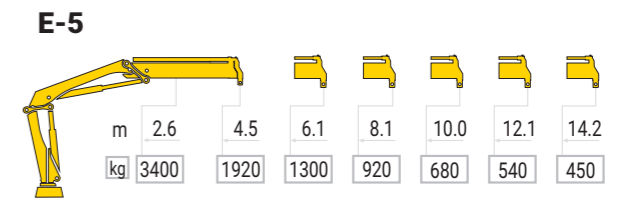
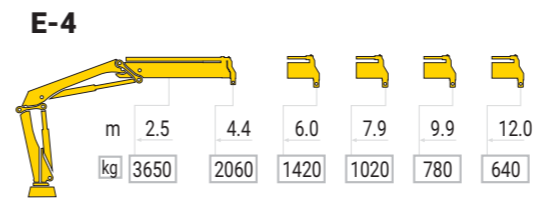
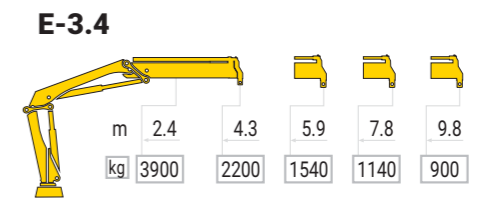
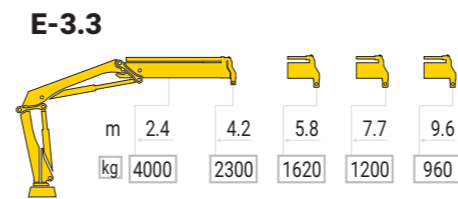
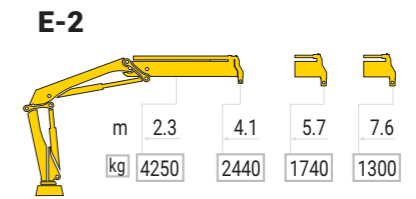
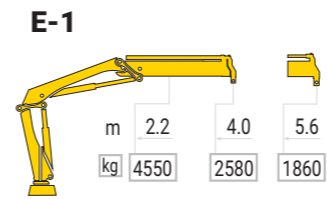
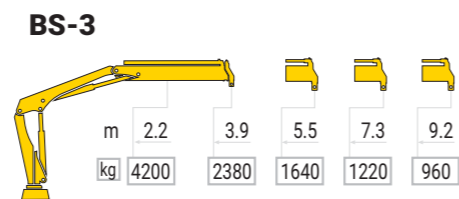
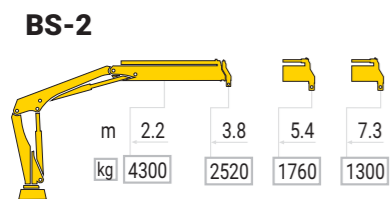
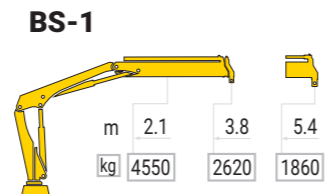
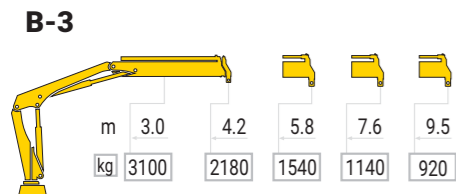
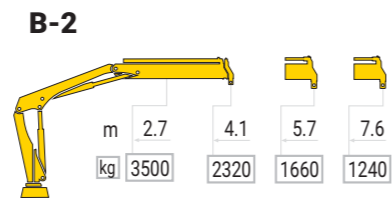
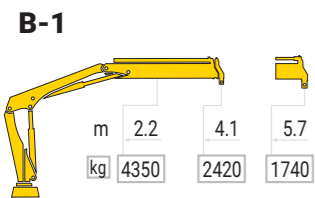


ES-4





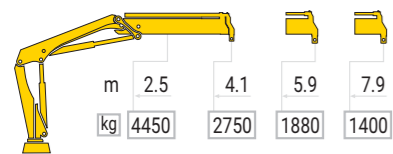
105 D



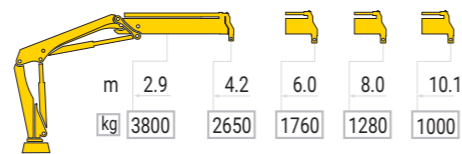


125 HP

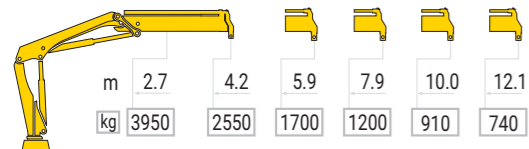
D-2



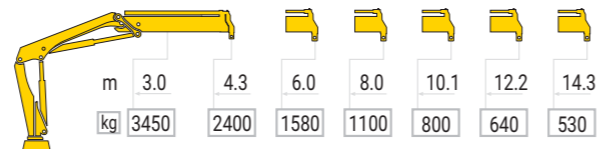
D-3



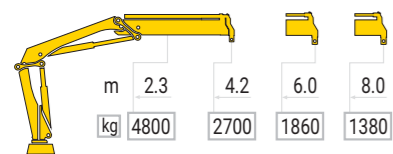
D-4



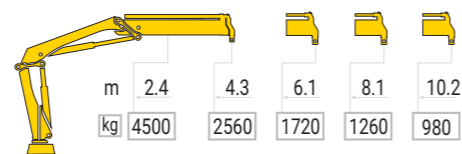
D-5



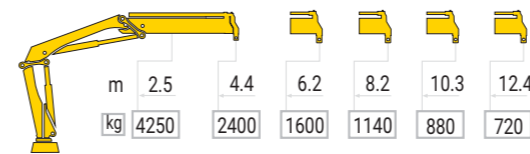
E-2



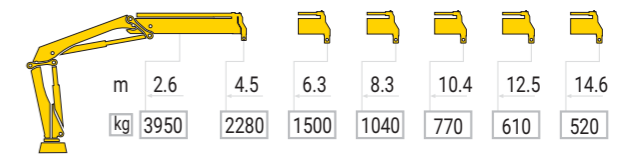
E-3



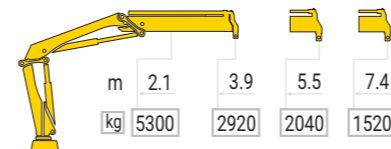
E-4



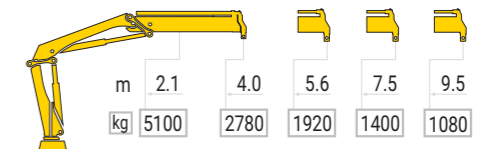
E-5



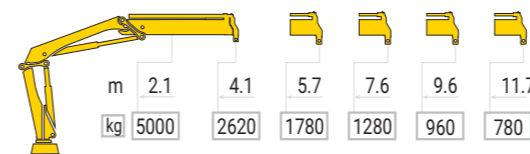
ES-2



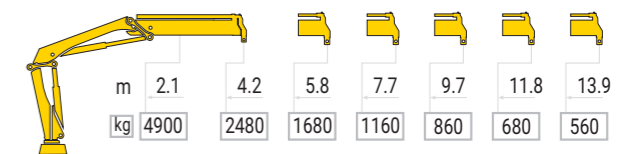
ES-3



ES-4



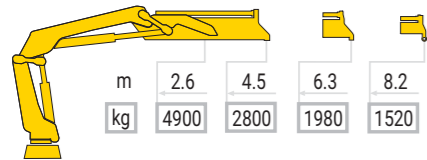
ES-5



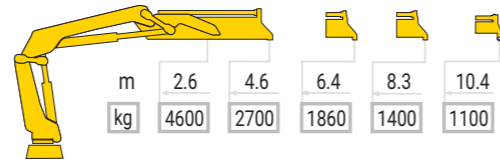


145 HP

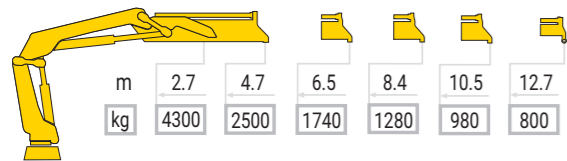
E-2



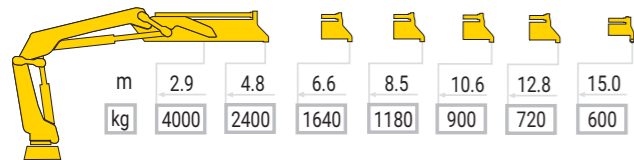
E-3



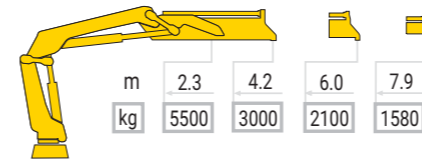
E-4



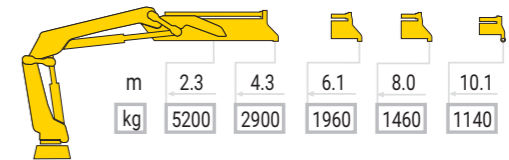
E-5



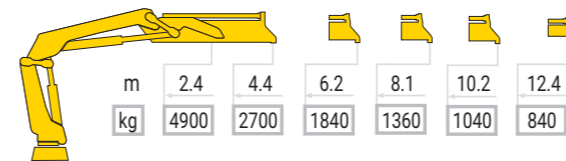
ES-2



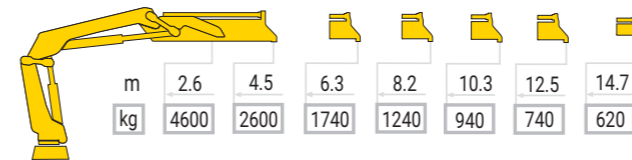
ES-3



ES-4

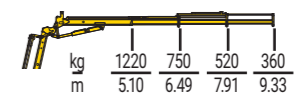
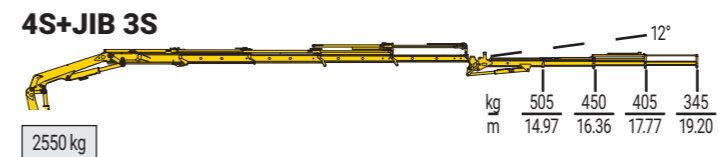
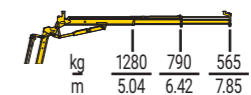
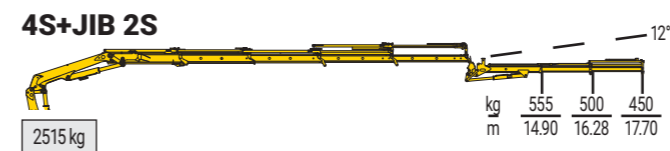
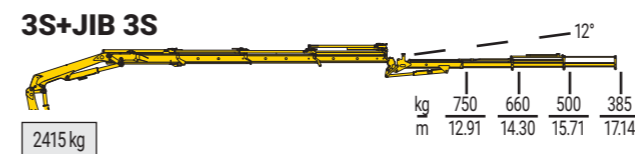
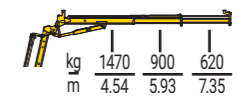
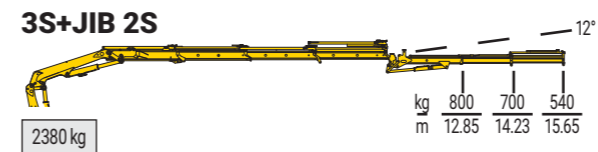
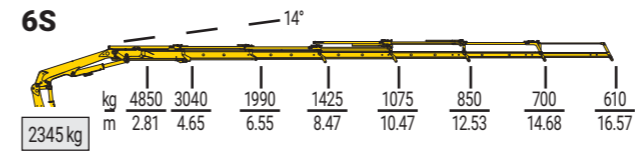
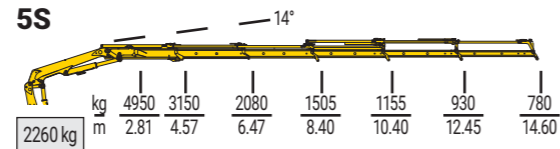
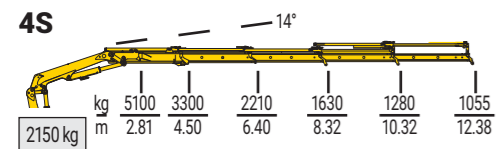
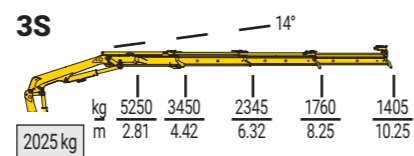
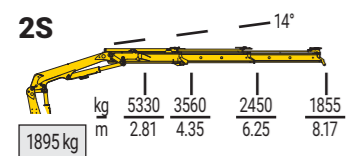


ES-5





175.2



standard



| MODEL | | | | | | | |
|-------|-------|-----|------|------|-----|------|----|
| | txm | (°) | mm | mm | mm | mm | t |
| 2S | 15.48 | 400 | 2295 | 2495 | 810 | 5960 | 15 |
| 3S | 15.26 | 400 | 2295 | 2495 | 810 | 5960 | 15 |
| 4S | 14.84 | 400 | 2295 | 2495 | 810 | 5960 | 15 |
| 5S | 14.40 | 400 | 2295 | 2505 | 920 | 5960 | 15 |

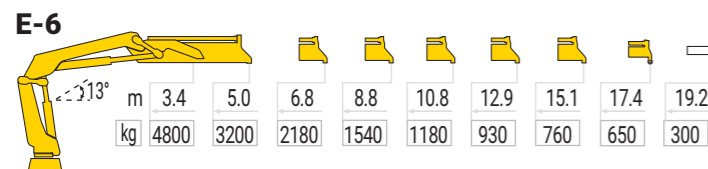
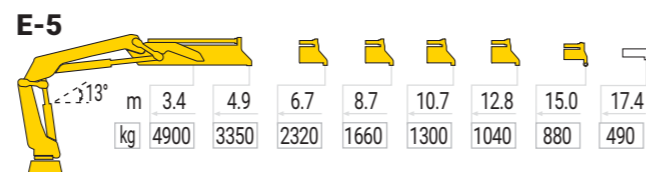
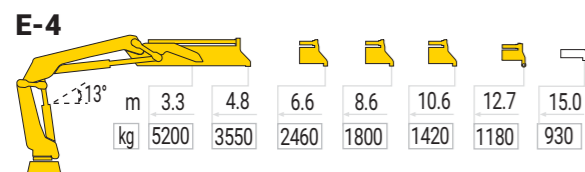
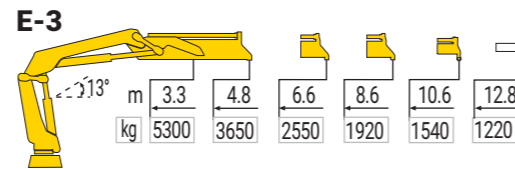
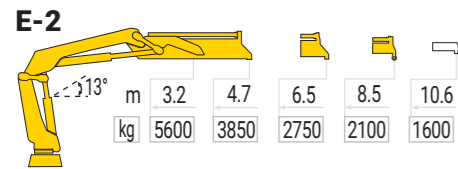
optional



| MODEL | | | | | | | |
|-----------|-------|-----|------|------|-----|------|----|
| | txm | (°) | mm | mm | mm | mm | t |
| 6S | 14.13 | 400 | 2295 | 2505 | 920 | 5960 | 15 |
| 3S+JIB 2S | 15.26 | 400 | 2295 | 2505 | 910 | 5960 | 15 |
| 3S+JIB 3S | 15.26 | 400 | 2295 | 2505 | 910 | 5960 | 15 |
| 4S+JIB 2S | 14.84 | 400 | 2295 | 2505 | 910 | 5960 | 15 |
| 4S+JIB 3S | 14.84 | 400 | 2295 | 2505 | 910 | 5960 | 15 |



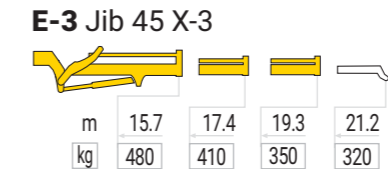
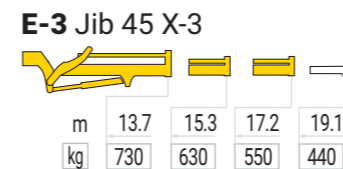
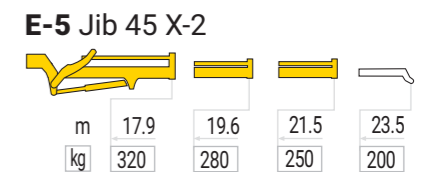
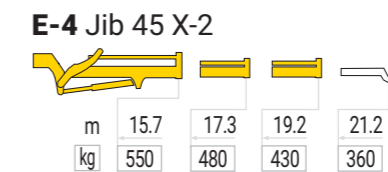
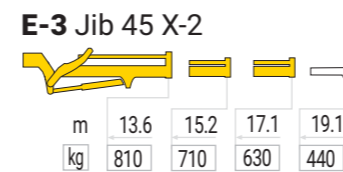
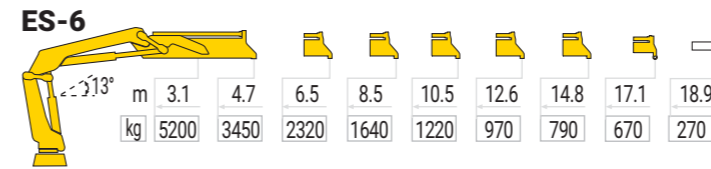
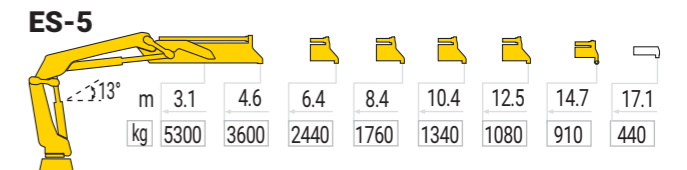
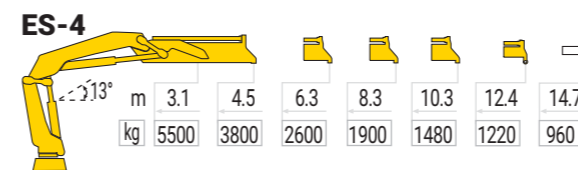
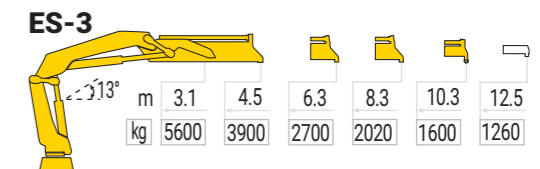
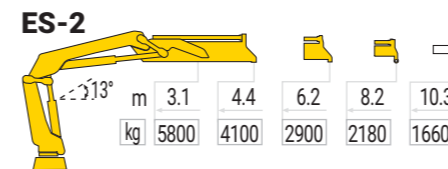
iX.195 HP



standard



| MODEL | | | | | |
|-------|-------|-----|------|------|-----|
| E-2 | 18,10 | 415 | 2260 | 1234 | 865 |
| E-3 | 17,50 | 415 | 2260 | 1234 | 965 |
| E-4 | 17,00 | 415 | 2260 | 1234 | 865 |
| E-5 | 16,60 | 415 | 2260 | 1245 | 965 |
| E-6 | 16,30 | 415 | 2260 | 1245 | 965 |
| ES-2 | 18,10 | 415 | 2260 | 1234 | 865 |
| ES-3 | 17,60 | 415 | 2260 | 1234 | 965 |



optional

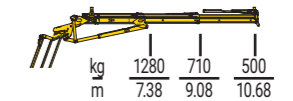
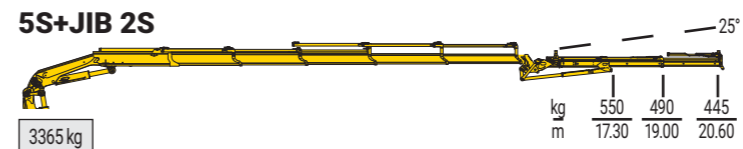
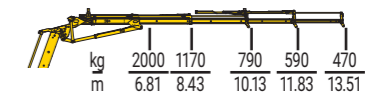
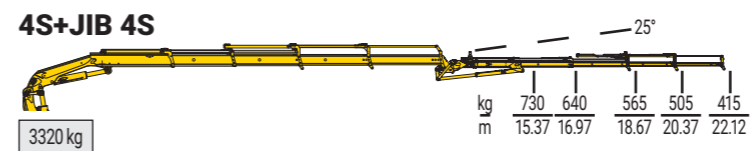
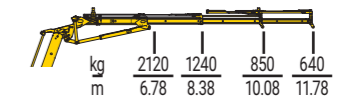
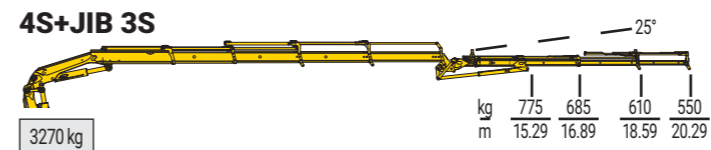
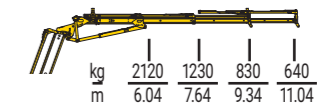
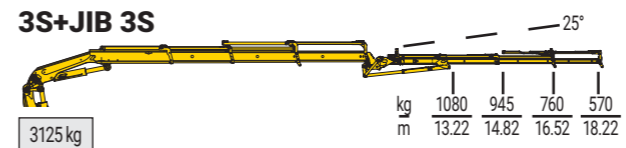
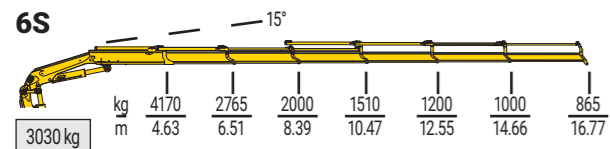
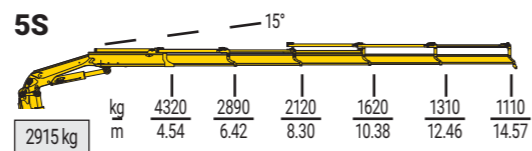
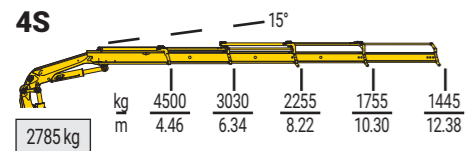
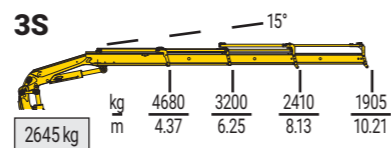
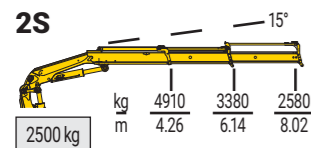


SPACE evo

| MODEL | | | | | |
|--------------|-------|-----|------|------|-----|
| ES-4 | 17,10 | 415 | 2260 | 1234 | 865 |
| ES-5 | 16,70 | 415 | 2260 | 1245 | 965 |
| ES-6 | 16,30 | 415 | 2260 | 1245 | 965 |
| E-3 J 45 X-2 | 17,50 | 415 | 2590 | 1170 | 965 |
| E-3 J 45 X-3 | 17,50 | 415 | 2600 | 1190 | 965 |
| E-4 J 45 X-2 | 17,00 | 415 | 2580 | 1200 | 865 |
| E-4 J 45 X-3 | 17,00 | 415 | 2600 | 1230 | 865 |
| E-5 J 45 X-2 | 16,60 | 415 | 2600 | 1240 | 965 |



215



standard



| MODEL | | | | | | | |
|-------|-------|-----|------|------|-----|------|----|
| | txm | (°) | mm | mm | mm | mm | t |
| 2S | 20.92 | ∞ | 2340 | 2500 | 950 | 5100 | 18 |
| | | | | | | 6400 | |
| 3S | 20.45 | ∞ | 2340 | 2500 | 950 | 5100 | 18 |
| | | | | | | 6400 | |
| 4S | 20.05 | ∞ | 2340 | 2500 | 950 | 5100 | 18 |
| | | | | | | 6400 | |
| 5S | 19.61 | ∞ | 2340 | 2500 | 950 | 5100 | 18 |
| | | | | | | 6400 | |
| 6S | 19.31 | ∞ | 2360 | 2500 | 950 | 5100 | 18 |
| | | | | | | 6400 | |

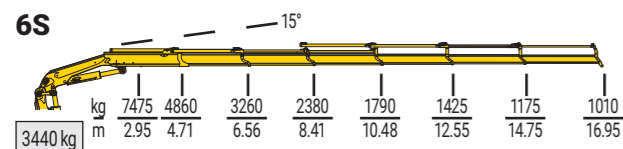
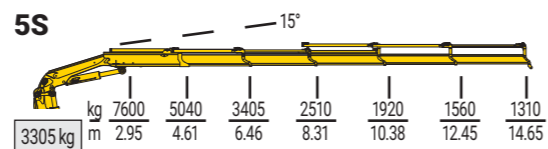
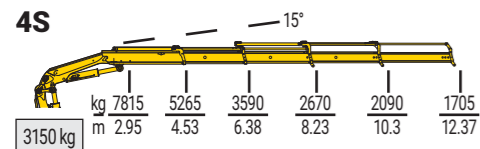
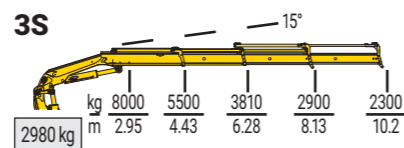
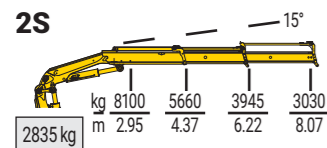
optional



| MODEL | | | | | | | |
|-----------|-------|-----|------|------|------|------|----|
| | txm | (°) | mm | mm | mm | mm | t |
| 3S+JIB 3S | 20.45 | ∞ | 2650 | 2500 | 1100 | 5100 | 18 |
| | | | | | | 6400 | |
| 4S+JIB 3S | 20.05 | ∞ | 2650 | 2500 | 1100 | 5100 | 18 |
| | | | | | | 6400 | |
| 4S+JIB 4S | 20.05 | ∞ | 2650 | 2500 | 1100 | 5100 | 18 |
| | | | | | | 6400 | |
| 5S+JIB 2S | 19.61 | ∞ | 2650 | 2500 | 1100 | 5100 | 18 |
| | | | | | | 6400 | |



265

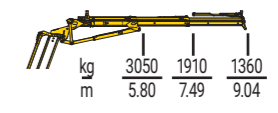
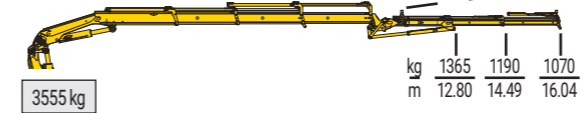


standard

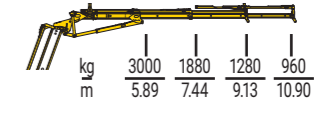
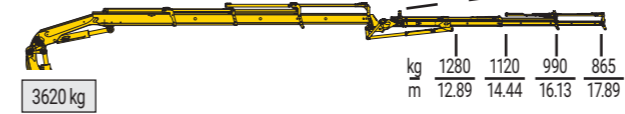


| MODEL | | | | | | | |
|-------|-------|-----|------|------|------|--------------|----|
| | txm | (°) | mm | mm | mm | mm | t |
| 2S | 24.74 | ∞ | 2340 | 2500 | 1050 | 5654 6590 | 18 |
| 3S | 24.39 | ∞ | 2340 | 2500 | 1050 | 5654 6590 | 18 |
| 4S | 23.85 | ∞ | 2340 | 2500 | 1050 | 5654 6590 | 18 |
| 5S | 23.24 | ∞ | 2340 | 2500 | 1050 | 5654 6590 | 18 |
| 6S | 22.87 | ∞ | 2340 | 2500 | 1050 | 5654 6590 | 18 |

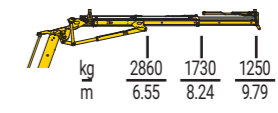
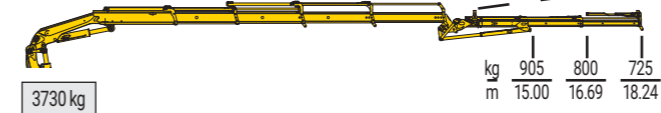
3S+JIB 2S



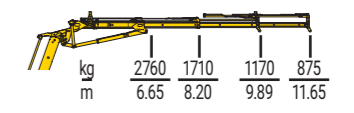
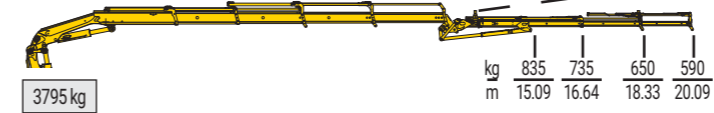
3S+JIB 3S



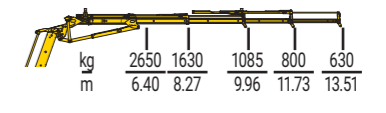
4S+JIB 2S



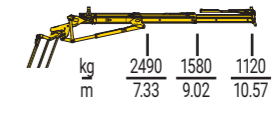
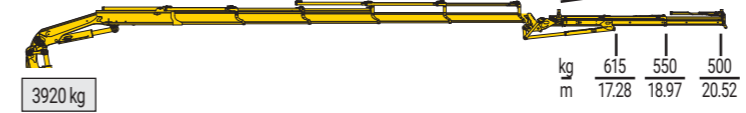
4S+JIB 3S



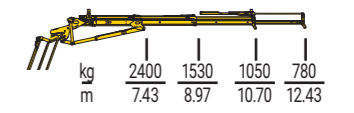
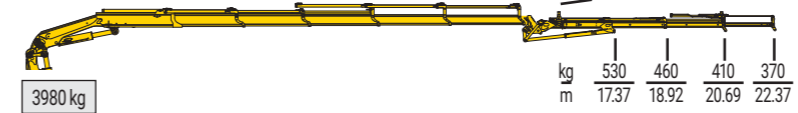
4S+JIB 4S



5S+JIB 2S



5S+JIB 3S



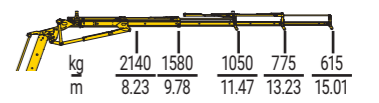
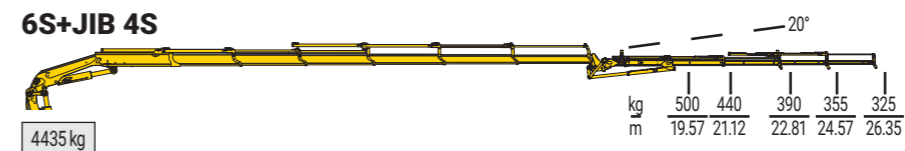
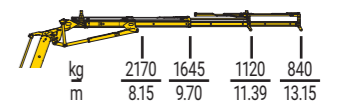
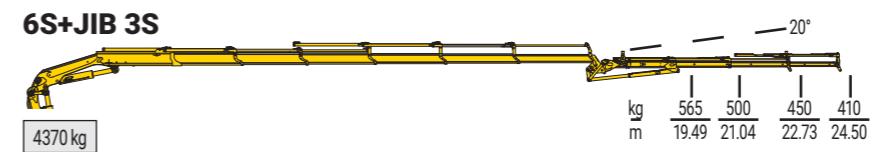
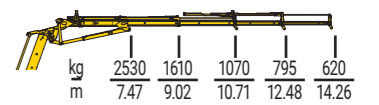
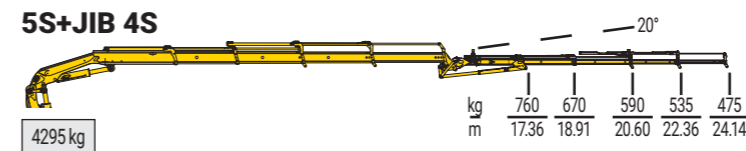
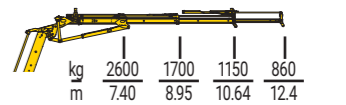
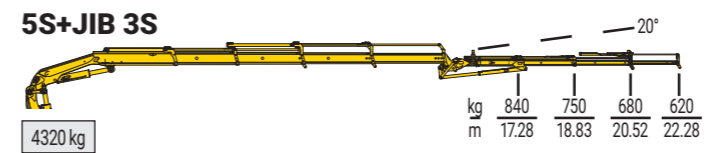
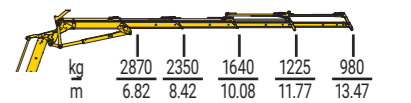
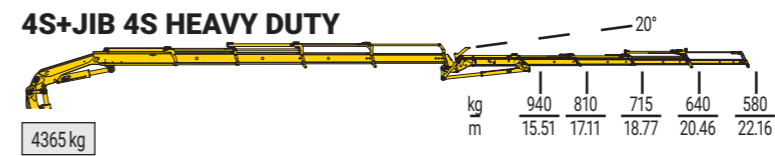
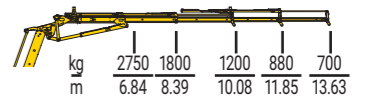
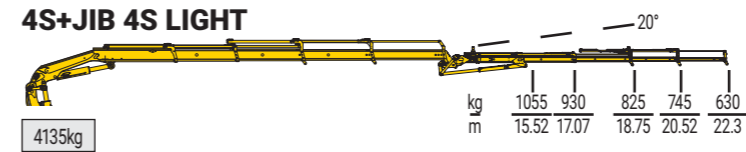
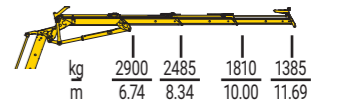
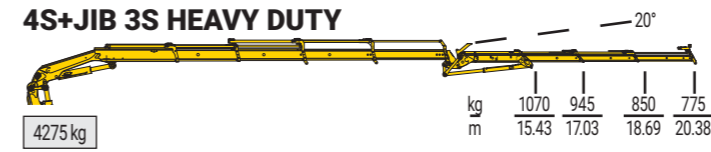
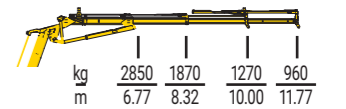
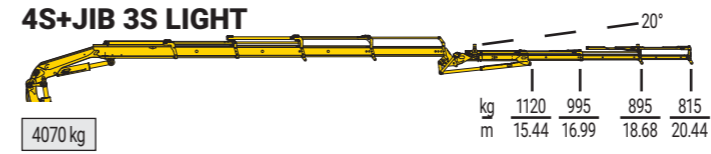
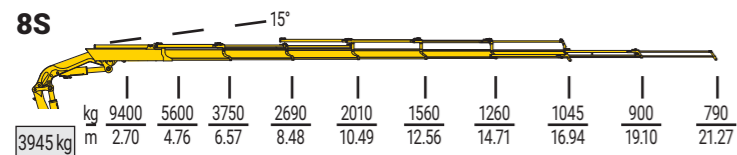
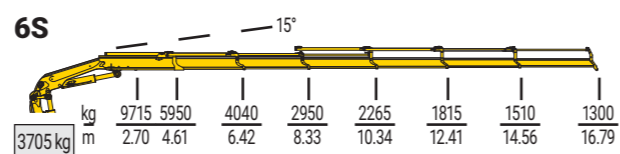
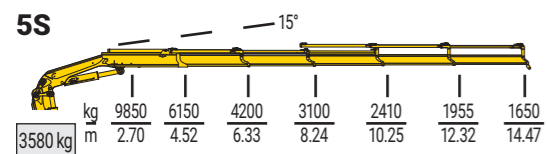
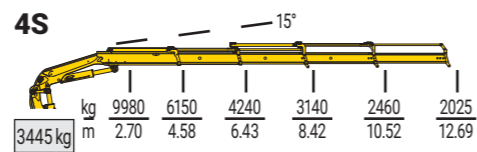
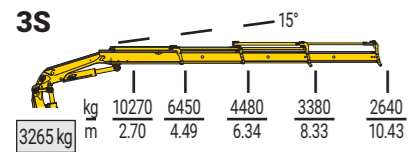
optional



| MODEL | | | | | | | |
|-----------|-------|-----|------|------|------|--------------|----|
| | txm | (°) | mm | mm | mm | mm | t |
| 3S+JIB 2S | 24.39 | ∞ | 2665 | 2500 | 1185 | 5654 6590 | 18 |
| 3S+JIB 3S | 24.39 | ∞ | 2665 | 2500 | 1185 | 5654 6590 | 18 |
| 4S+JIB 2S | 23.85 | ∞ | 2665 | 2500 | 1185 | 5654 6590 | 18 |
| 4S+JIB 3S | 23.85 | ∞ | 2665 | 2500 | 1185 | 5654 6590 | 18 |
| 4S+JIB 4S | 23.85 | ∞ | 2665 | 2500 | 1185 | 5654 6590 | 18 |
| 5S+JIB 2S | 23.24 | ∞ | 2665 | 2500 | 1185 | 5654 6590 | 18 |
| 5S+JIB 3S | 23.24 | ∞ | 2665 | 2500 | 1185 | 5654 6590 | 18 |



315



standard



| MODEL | txm | (°) | mm | mm | mm | mm | mm | t |
|-----------------|-------|-----|------|------|------|------|------|----|
| 3S | 28.97 | ∞ | 2355 | 2500 | 1025 | 5654 | 6590 | 18 |
| 4S | 28.18 | ∞ | 2355 | 2500 | 1025 | 5654 | 6590 | 18 |
| 5S | 27.80 | ∞ | 2355 | 2500 | 1075 | 5654 | 6590 | 18 |
| 6S | 27.44 | ∞ | 2355 | 2500 | 1075 | 5654 | 6590 | 18 |
| 8S | 26.68 | ∞ | 2355 | 2500 | 1145 | 5654 | 6590 | 18 |
| 4S+JIB 3S LIGHT | 28.18 | ∞ | 2540 | 2500 | 1130 | 5654 | 6590 | 18 |
| 4S+JIB 3S HD | 28.18 | ∞ | 2600 | 2500 | 1130 | 5654 | 6590 | 18 |

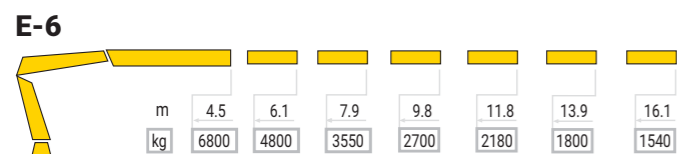
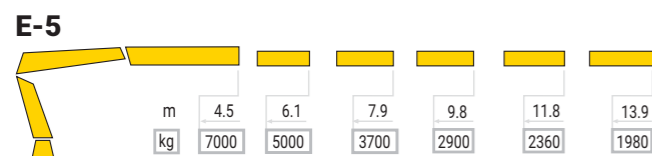
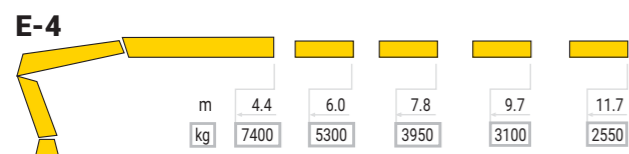
optional



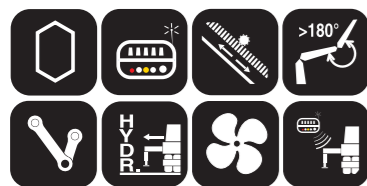
| MODEL | txm | (°) | mm | mm | mm | mm | t | |
|-----------------|-------|-----|------|------|------|------|------|----|
| 4S+JIB 4S LIGHT | 28.18 | ∞ | 2540 | 2500 | 1130 | 5654 | 6590 | 18 |
| 4S+JIB 4S HD | 28.18 | ∞ | 2600 | 2500 | 1130 | 5654 | 6590 | 18 |
| 5S+JIB 3S | 27.80 | ∞ | 2540 | 2500 | 1185 | 5654 | 6590 | 18 |
| 5S+JIB 4S | 27.80 | ∞ | 2540 | 2500 | 1185 | 5654 | 6590 | 18 |
| 6S+JIB 3S | 27.44 | ∞ | 2540 | 2500 | 1185 | 5654 | 6590 | 18 |
| 6S+JIB 4S | 27.44 | ∞ | 2540 | 2500 | 1185 | 5654 | 6590 | 18 |



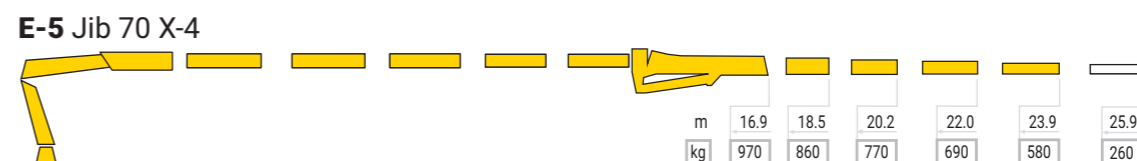
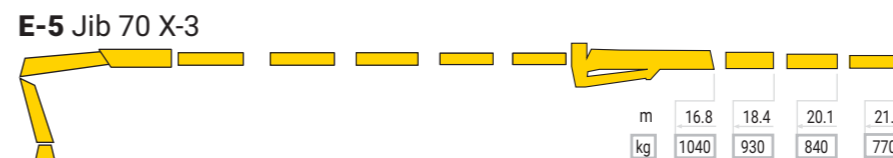
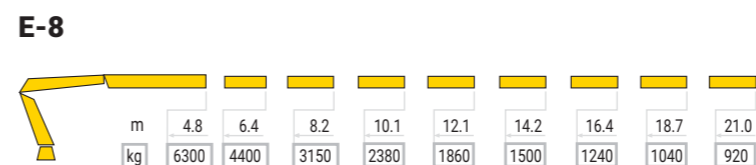
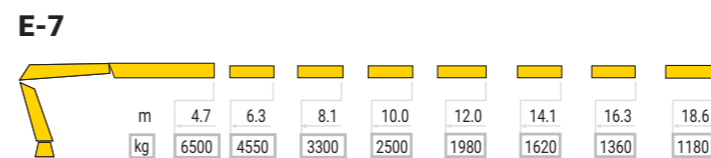
IX.355 HP



standard



| MODEL | txm | (°) | mm | mm | mm |
|-------|-------|-----|------|------|------|
| E-4 | 32,50 | ∞ | 2427 | 1245 | 1321 |
| E-5 | 31,90 | ∞ | 2427 | 1256 | 1363 |
| E-6 | 31,40 | ∞ | 2427 | 1253 | 1374 |
| E-7 | 30,80 | ∞ | 2427 | 1253 | 1401 |
| E-8 | 30,40 | ∞ | 2427 | 1253 | 1400 |



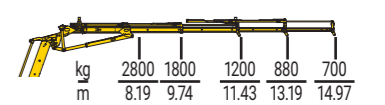
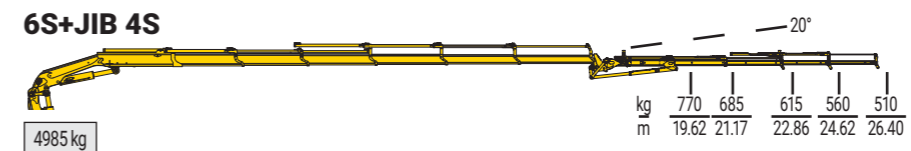
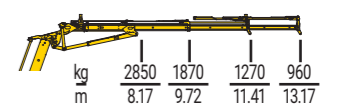
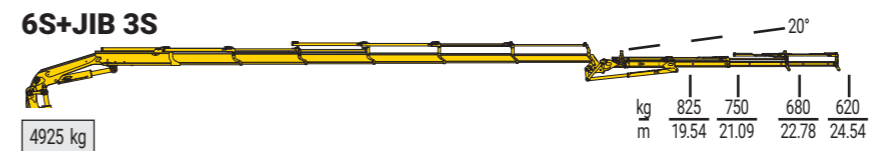
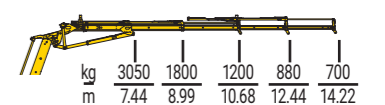
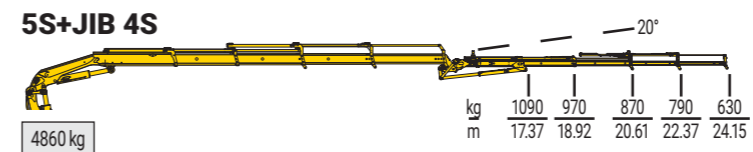
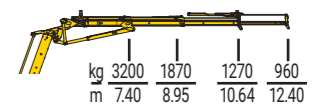
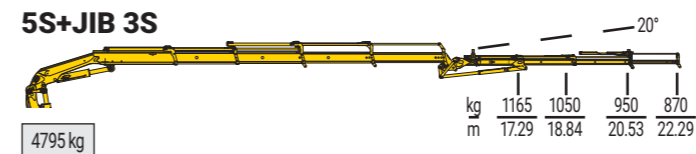
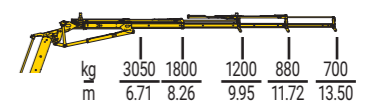
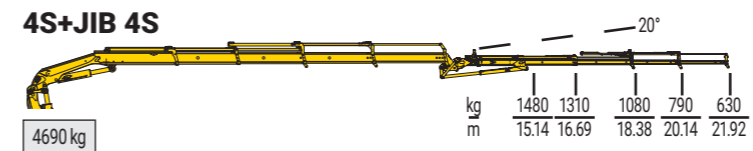
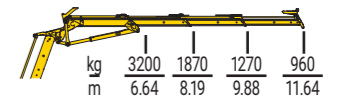
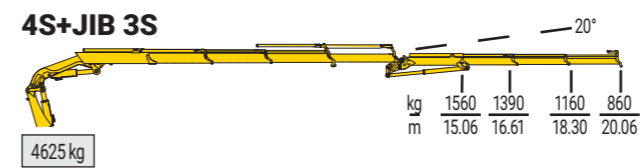
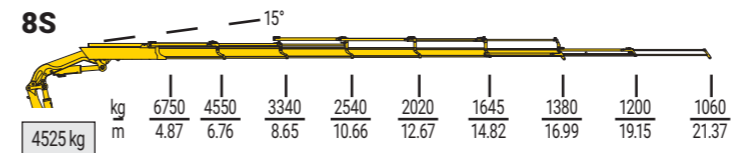
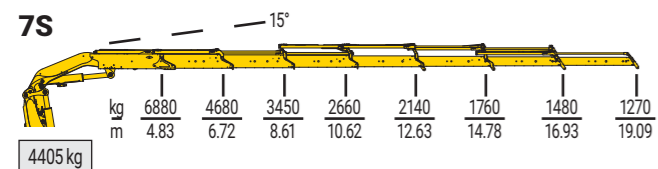
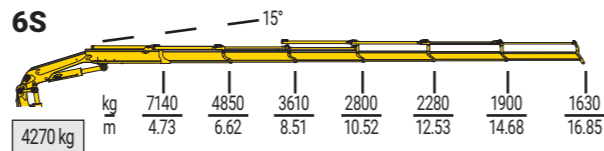
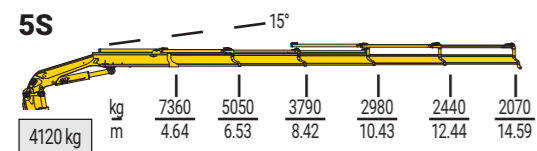
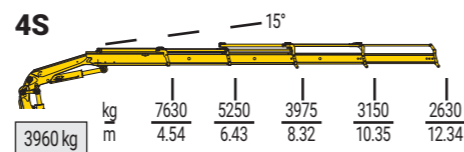
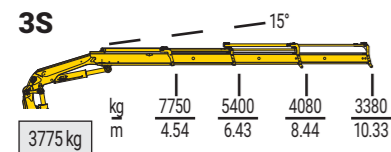
optional



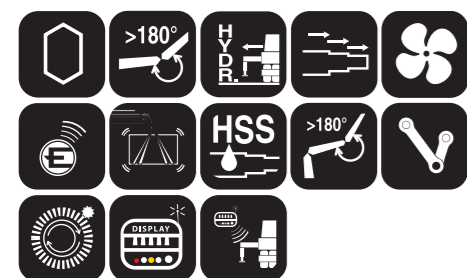
| MODEL | txm | (°) | mm | mm | mm |
|--------------|-------|-----|------|------|------|
| E-5 J 70 X-3 | 31,90 | ∞ | 2712 | 1245 | 1363 |
| E-5 J 70 X-4 | 31,90 | ∞ | 2712 | 1245 | 1363 |
| E-6 J 70 X-3 | 31,40 | ∞ | 2712 | 1245 | 1374 |
| E-6 J 70 X-4 | 31,40 | ∞ | 2712 | 1245 | 1374 |



395



standard

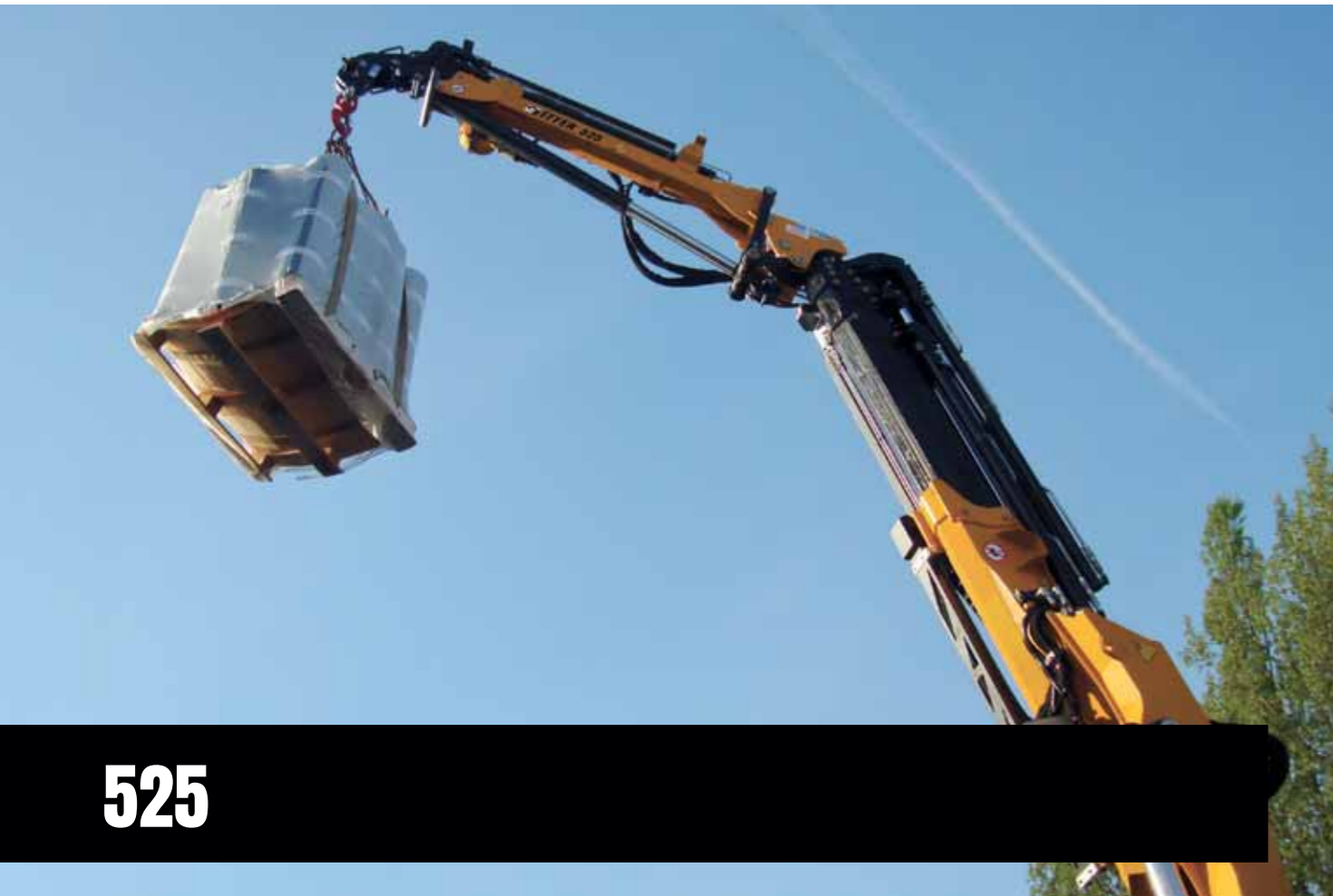


| MODEL | | | | | | | |
|-------|-------|-----|------|------|------|--------------|----|
| | txm | (°) | mm | mm | mm | mm | t |
| 3S | 35.18 | ∞ | 2420 | 2500 | 1170 | 5600 7400 | 26 |
| 4S | 34.65 | ∞ | 2420 | 2500 | 1170 | 5600 7400 | 26 |
| 5S | 34.13 | ∞ | 2420 | 2500 | 1170 | 5600 7400 | 26 |
| 6S | 33.76 | ∞ | 2420 | 2500 | 1170 | 5600 7400 | 26 |
| 7S | 33.23 | ∞ | 2560 | 2500 | 1250 | 5600 7400 | 26 |
| 8S | 32.89 | ∞ | 2630 | 2500 | 1250 | 5600 7400 | 26 |

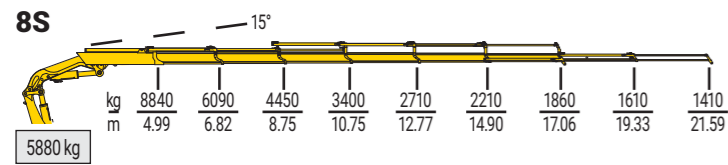
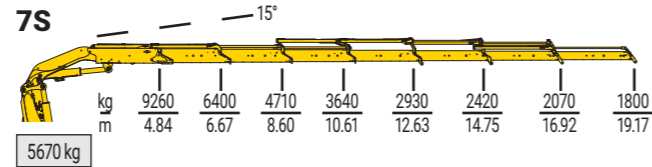
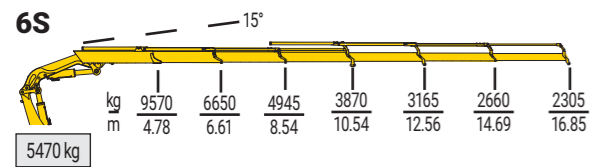
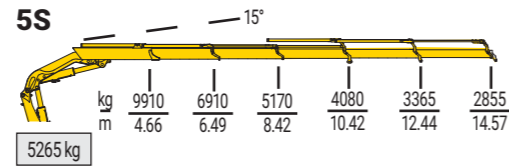
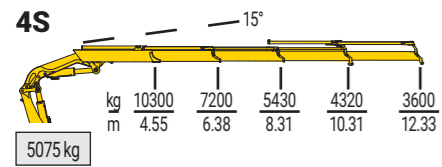
optional



| MODEL | | | | | | | |
|-----------|-------|-----|------|------|------|--------------|----|
| | txm | (°) | mm | mm | mm | mm | t |
| 4S+JIB 3S | 34.65 | ∞ | 2665 | 2500 | 1290 | 5600 7400 | 26 |
| 4S+JIB 4S | 34.65 | ∞ | 2665 | 2500 | 1290 | 5600 7400 | 26 |
| 5S+JIB 3S | 34.13 | ∞ | 2665 | 2500 | 1290 | 5600 7400 | 26 |
| 5S+JIB 4S | 34.13 | ∞ | 2665 | 2500 | 1290 | 5600 7400 | 26 |
| 6S+JIB 3S | 33.76 | ∞ | 2665 | 2500 | 1290 | 5600 7400 | 26 |
| 6S+JIB 4S | 33.76 | ∞ | 2665 | 2500 | 1290 | 5600 7400 | 26 |



525

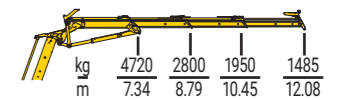
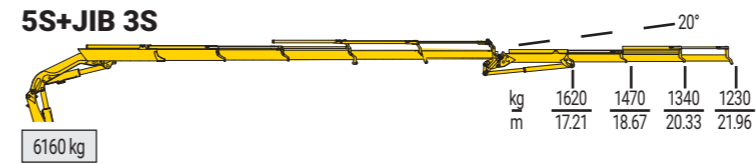


standard

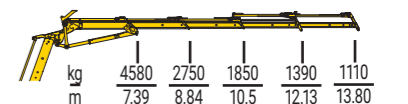
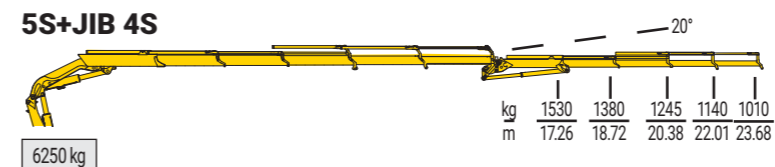


| MODEL | | | | | | | |
|-------|-------|-----|------|------|------|------|----|
| | txm | (°) | mm | mm | mm | mm | t |
| 4S | 46.84 | ∞ | 2450 | 2550 | 1305 | 7830 | 26 |
| 5S | 46.17 | ∞ | 2450 | 2550 | 1305 | 7830 | 26 |
| 6S | 45.48 | ∞ | 2450 | 2550 | 1305 | 7830 | 26 |
| 7S | 44.85 | ∞ | 2490 | 2550 | 1435 | 7830 | 26 |
| 8S | 44.09 | ∞ | 2490 | 2550 | 1435 | 7830 | 26 |

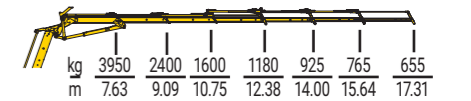
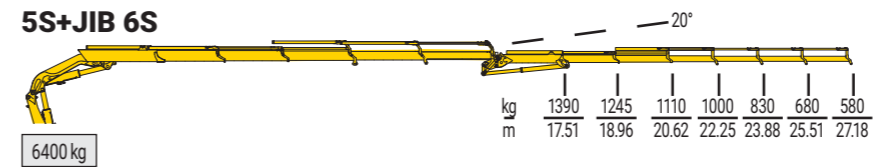
5S+JIB 3S



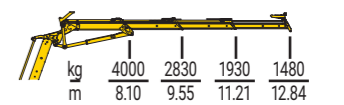
5S+JIB 4S



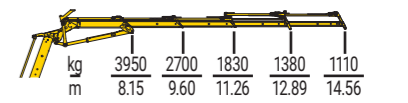
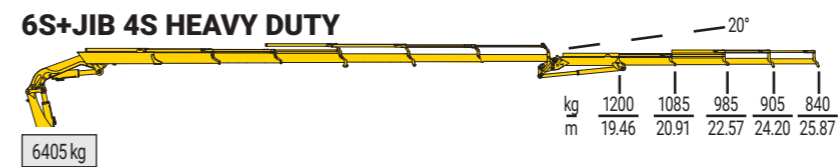
5S+JIB 6S



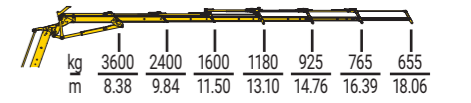
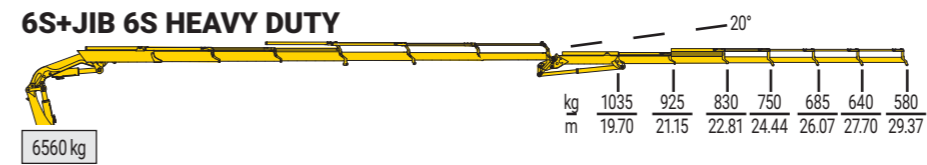
6S+JIB 3S HEAVY DUTY



6S+JIB 4S HEAVY DUTY



6S+JIB 6S HEAVY DUTY



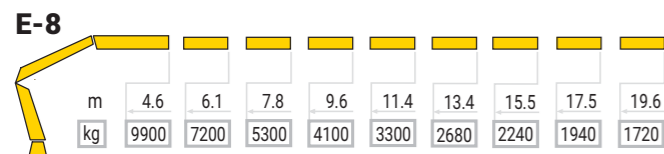
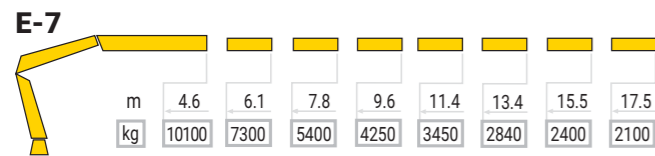
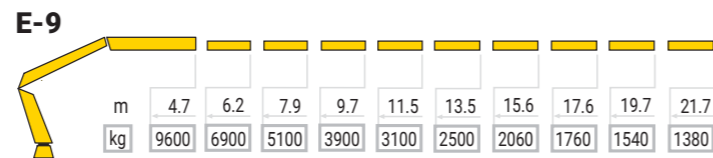
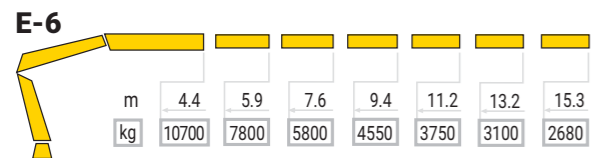
optional



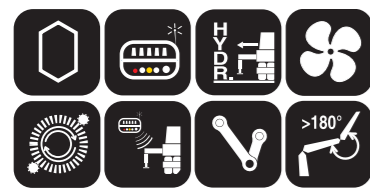
| MODEL | | | | | | | |
|--------------|-------|-----|------|------|------|------|----|
| | txm | (°) | mm | mm | mm | mm | t |
| 5S+JIB 3S | 46.17 | ∞ | 2590 | 2550 | 1475 | 7830 | 26 |
| 5S+JIB 4S | 46.17 | ∞ | 2590 | 2550 | 1475 | 7830 | 26 |
| 5S+JIB 6S | 46.17 | ∞ | 2590 | 2550 | 1475 | 7830 | 26 |
| 6S+JIB 3S HD | 45.48 | ∞ | 2590 | 2550 | 1475 | 7830 | 26 |
| 6S+JIB 4S HD | 45.48 | ∞ | 2590 | 2550 | 1475 | 7830 | 26 |
| 6S+JIB 6S HD | 45.48 | ∞ | 2590 | 2550 | 1475 | 7830 | 26 |



IX.550 HP

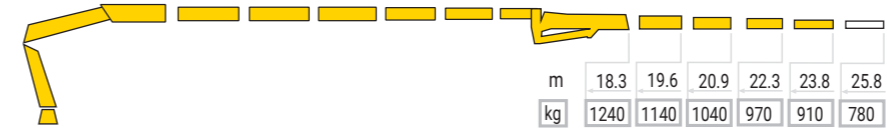


standard

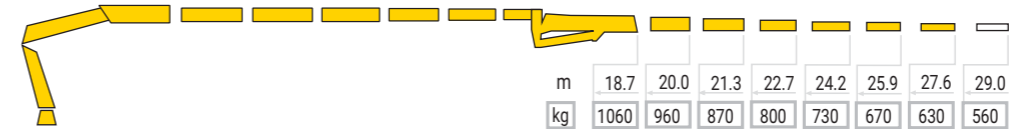


| MODEL | | | | | |
|-------|-------|-----|------|------|------|
| | txm | (°) | mm | mm | mm |
| E-6 | 47,10 | ∞ | 2490 | 1280 | 1653 |
| E-7 | 46,50 | ∞ | 2490 | 1280 | 1653 |
| E-8 | 45,80 | ∞ | 2490 | 1280 | 1653 |
| E-9 | 45,30 | ∞ | 2490 | 1280 | 1698 |

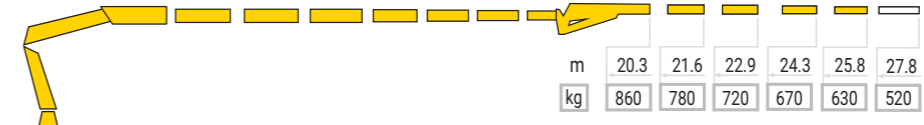
E-6 Jib 150 X-4



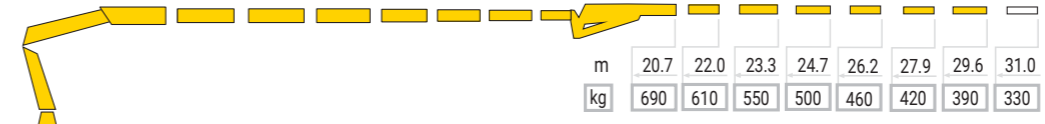
E-6 Jib 150 X-6



E-7 Jib 150 X-4



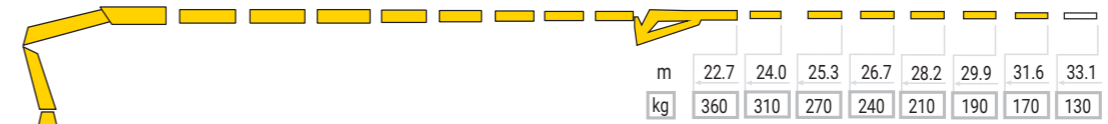
E-7 Jib 150 X-6



E-8 Jib 150 X-4



E-8 Jib 150 X-6



optional

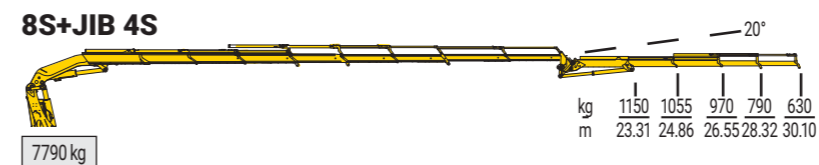
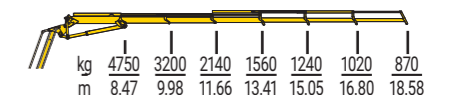
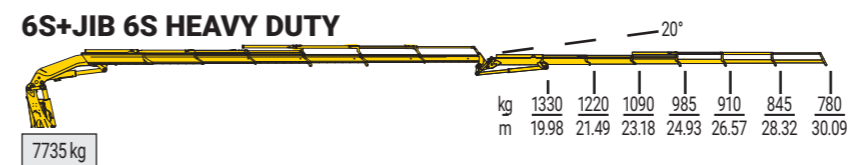
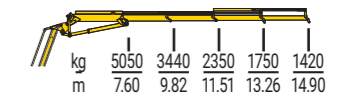
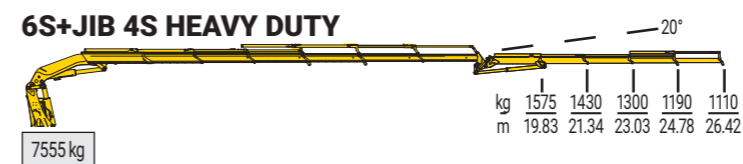
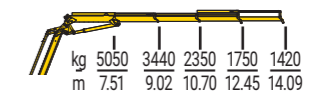
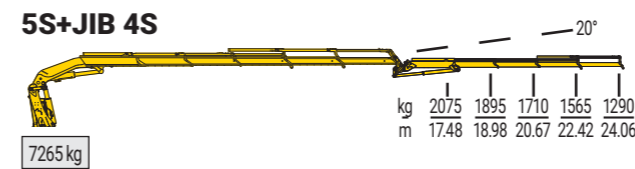
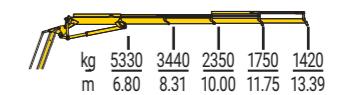
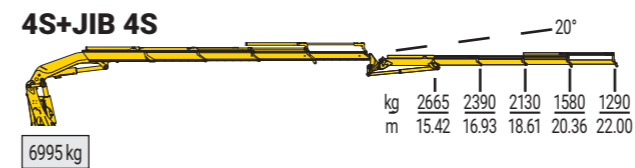
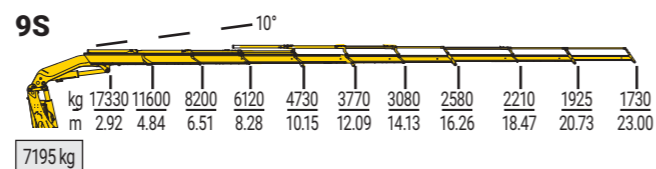
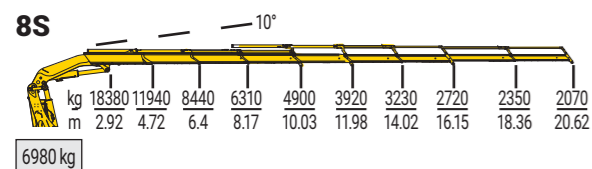
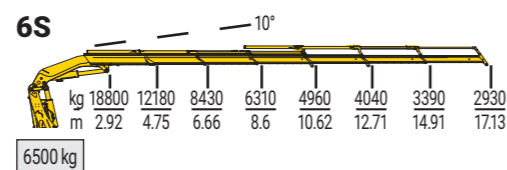
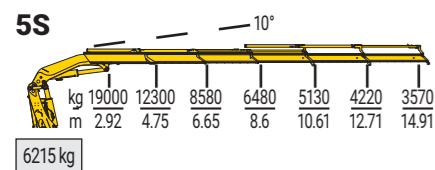
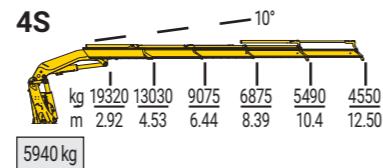
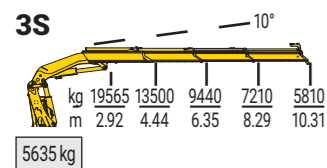


SPACE evo

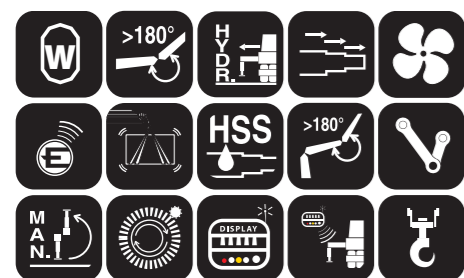
| MODEL | | | | | |
|-------------------|-------|-----|----|----|------|
| | txm | (°) | mm | mm | mm |
| E-6 J 150 X-4 | 47,10 | ∞ | - | - | 1758 |
| E-6 J 150 X-6 | 47,10 | ∞ | - | - | 1758 |
| E-7 J 150 X-4 JDC | 46,50 | ∞ | - | - | 1775 |
| E-7 J 150 X-6 JDC | 46,50 | ∞ | - | - | 1775 |
| E-8 J 150 X-4 JDC | 45,80 | ∞ | - | - | 1783 |
| E-8 J 150 X-6 JDC | 45,80 | ∞ | - | - | 1783 |



685



standard



| MODEL | | | | | | | | |
|-------|-------|-----|------|------|------|------|----|---|
| | txm | (°) | mm | mm | mm | mm | mm | t |
| 3S | 60.21 | ∞ | 2465 | 2550 | 1595 | 8710 | 26 | |
| 4S | 59.02 | ∞ | 2465 | 2550 | 1595 | 8710 | 26 | |
| 5S | 58.37 | ∞ | 2465 | 2550 | 1595 | 8710 | 26 | |
| 6S | 57.87 | ∞ | 2465 | 2550 | 1595 | 8710 | 26 | |
| 8S | 56.36 | ∞ | 2465 | 2550 | 1670 | 8710 | 26 | |
| 9S | 56.14 | ∞ | 2465 | 2550 | 1725 | 8710 | 26 | |

optional



| MODEL | | | | | | | | |
|--------------|-------|-----|------|------|------|------|----|---|
| | txm | (°) | mm | mm | mm | mm | mm | t |
| 4S+JIB 4S | 59.02 | ∞ | 2650 | 2550 | 1785 | 8710 | 26 | |
| 5S+JIB 4S | 58.37 | ∞ | 2650 | 2550 | 1785 | 8710 | 26 | |
| 6S+JIB 4S HD | 57.87 | ∞ | 2650 | 2550 | 1785 | 8710 | 26 | |
| 6S+JIB 6S HD | 57.87 | ∞ | 2650 | 2550 | 1785 | 8710 | 26 | |
| 8S+JIB 4S | 56.36 | ∞ | 2650 | 2550 | 1885 | 8710 | 26 | |



IQ.950 HP

E-8

| | | | | | | | | | |
|----|-------|-------|------|------|------|------|------|------|------|
| m | 4.6 | 6.1 | 7.7 | 9.5 | 11.2 | 13.1 | 15.1 | 17.3 | 19.5 |
| kg | 16700 | 12300 | 9400 | 7400 | 6100 | 5100 | 4350 | 3750 | 3300 |

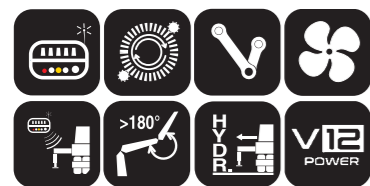
E-9

| | | | | | | | | | | |
|----|-------|-------|------|------|------|------|------|------|------|------|
| m | 4.6 | 6.1 | 7.8 | 9.5 | 11.2 | 13.1 | 15.2 | 17.4 | 19.6 | 21.8 |
| kg | 16600 | 12100 | 9100 | 7200 | 5900 | 4900 | 4100 | 3550 | 3100 | 2750 |

E-10

| | | | | | | | | | | | |
|----|-------|-------|------|------|------|------|------|------|------|------|------|
| m | 4.7 | 6.2 | 7.9 | 9.6 | 11.3 | 13.2 | 15.3 | 17.5 | 19.7 | 21.9 | 23.9 |
| kg | 16100 | 11800 | 8900 | 7000 | 5700 | 4700 | 3950 | 3350 | 2900 | 2550 | 2340 |

standard



| MODEL | txm | (°) | mm | mm | mm |
|-------|-------|-----|------|------|------|
| E-8 | 77,20 | ∞ | 2507 | 1263 | 1817 |
| E-9 | 76,20 | ∞ | 2507 | 1263 | 1847 |
| E-10 | 75,70 | ∞ | 2507 | 1263 | 1847 |

E-8 Jib 155 Q-6

| | | | | | | | | |
|----|------|------|------|------|------|------|------|------|
| m | 22.6 | 24.0 | 25.5 | 27.0 | 28.6 | 30.3 | 32.1 | 33.9 |
| kg | 1720 | 1600 | 1480 | 1380 | 1280 | 1080 | 920 | 760 |

E-9 Jib 155 Q-6

| | | | | | | | | |
|----|------|------|------|------|------|------|------|------|
| m | 24.9 | 26.3 | 27.8 | 29.3 | 30.9 | 32.6 | 34.4 | 36.2 |
| kg | 1260 | 1160 | 1080 | 1000 | 940 | 790 | 660 | 530 |

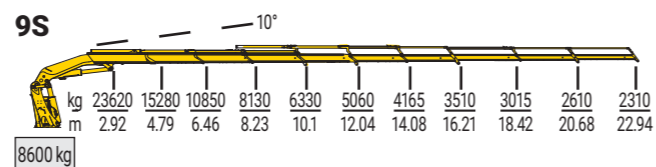
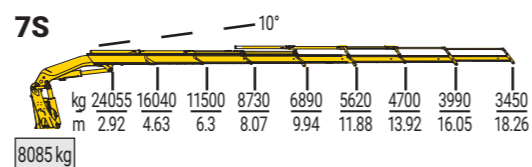
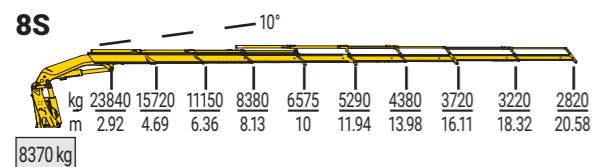
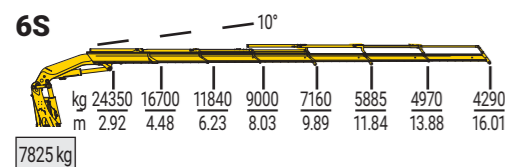
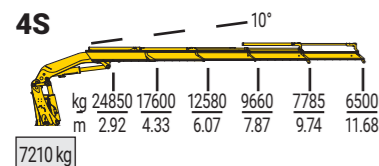
optional



| MODEL | txm | (°) | mm | mm | mm |
|---------------|-------|-----|------|------|------|
| E-8 J 155 Q-6 | 77,20 | ∞ | 2730 | 1263 | 2005 |
| E-9 J 155 Q-6 | 76,20 | ∞ | 2730 | 1263 | 2095 |



955

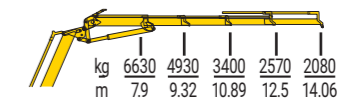


standard

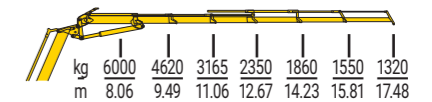
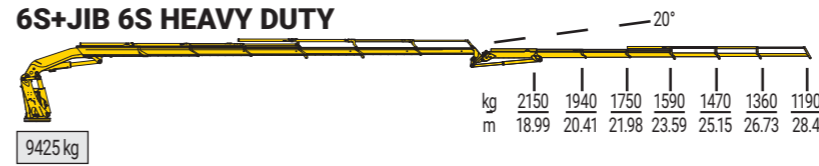


| MODEL | | | | | | | |
|-------|-------|-----|------|------|------|------|-------|
| | txm | (°) | mm | mm | mm | mm | t |
| 4S | 76.41 | ∞ | 2485 | 2550 | 1770 | 8710 | 26-32 |
| 6S | 74.88 | ∞ | 2485 | 2550 | 1805 | 8710 | 26-32 |
| 7S | 74.24 | ∞ | 2485 | 2550 | 1805 | 8710 | 26-32 |
| 8S | 73.72 | ∞ | 2485 | 2550 | 1805 | 8710 | 26-32 |
| 9S | 73.17 | ∞ | 2485 | 2550 | 1915 | 8710 | 26-32 |

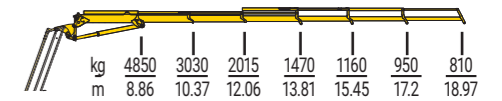
6S+JIB 4S HEAVY DUTY



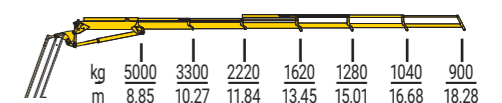
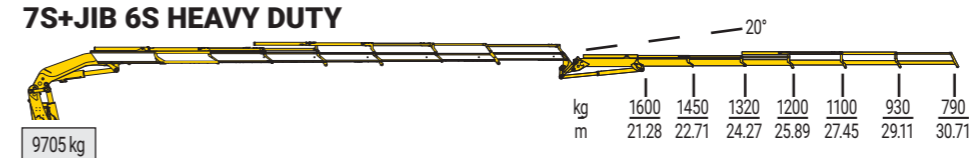
6S+JIB 6S HEAVY DUTY



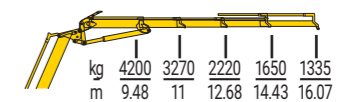
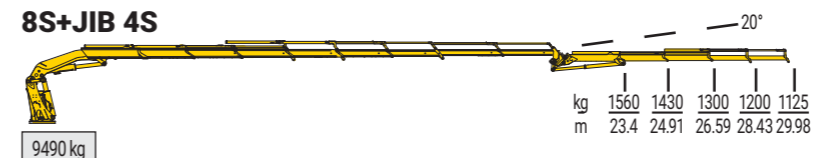
7S+JIB 6S



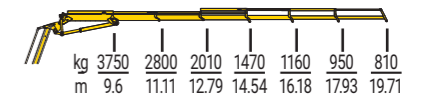
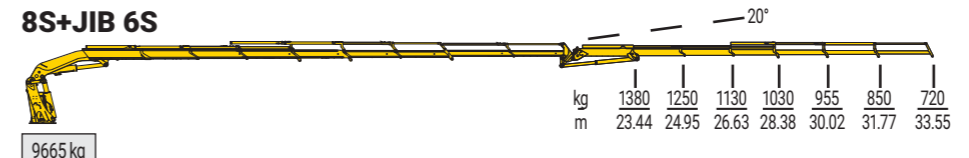
7S+JIB 6S HEAVY DUTY



8S+JIB 4S



8S+JIB 6S



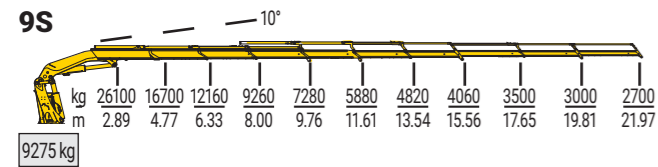
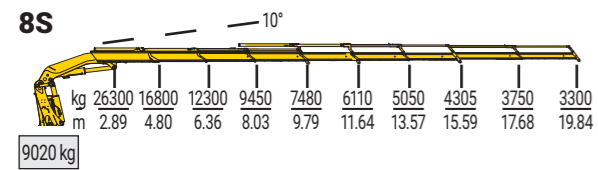
optional



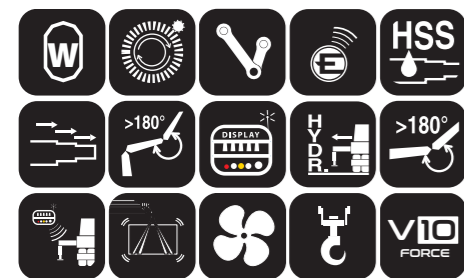
| MODEL | | | | | | | |
|--------------|-------|-----|------|------|------|------|-------|
| | txm | (°) | mm | mm | mm | mm | t |
| 6S+JIB 4S HD | 74.88 | ∞ | 2700 | 2550 | 2020 | 8710 | 26-32 |
| 6S+JIB 6S HD | 74.88 | ∞ | 2700 | 2550 | 2020 | 8710 | 26-32 |
| 7S+JIB 6S | 74.24 | ∞ | 2685 | 2550 | 2020 | 8710 | 26-32 |
| 7S+JIB 6S HD | 74.24 | ∞ | 2700 | 2550 | 2020 | 8710 | 26-32 |
| 8S+JIB 4S | 73.72 | ∞ | 2685 | 2550 | 2020 | 8710 | 26-32 |
| 8S+JIB 6S | 73.72 | ∞ | 2685 | 2550 | 2020 | 8710 | 26-32 |



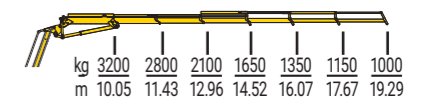
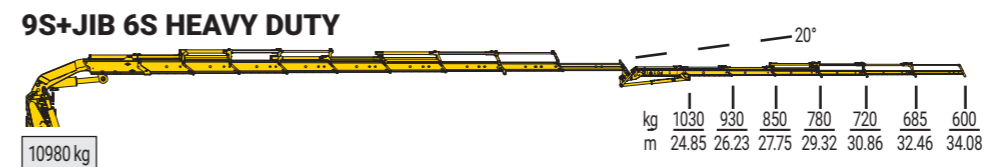
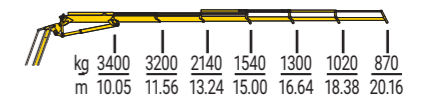
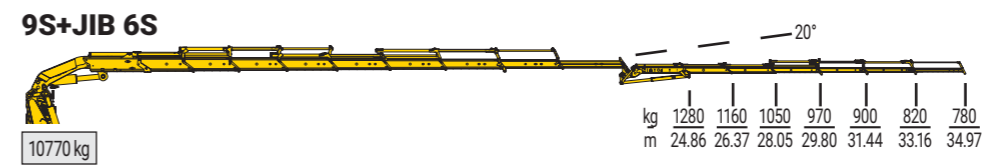
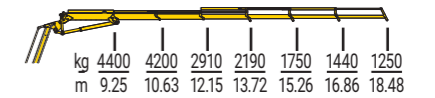
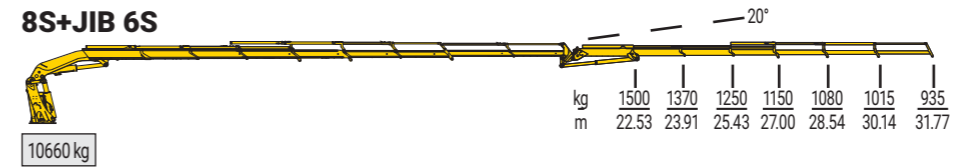
1000



standard



| MODEL | | | | | | | | | | | GW |
|-------|-------|-----|------|------|------|------|----|---|--|--|----|
| | txm | (°) | mm | mm | mm | mm | mm | t | | | |
| 8S | 80.64 | ∞ | 2518 | 2543 | 1938 | 8722 | 32 | | | | |
| 9S | 80.16 | ∞ | 2518 | 2543 | 1938 | 8722 | 32 | | | | |



optional



| MODEL | | | | | | | | | | | GW |
|--------------|-------|-----|------|------|------|------|----|---|--|--|----|
| | txm | (°) | mm | mm | mm | mm | mm | t | | | |
| 8S+JIB 6S | 80.64 | ∞ | 2725 | 2543 | 2120 | 8722 | 32 | | | | |
| 9S+JIB 6S | 80.16 | ∞ | 2725 | 2543 | 2120 | 8722 | 32 | | | | |
| 9S+JIB 6S HD | 80.16 | ∞ | 2725 | 2543 | 2120 | 8722 | 32 | | | | |



iQ.1200 HP

E-8

| | | | | | | | | | |
|----|-------|-------|-------|------|------|------|------|------|------|
| m | 4.6 | 6.1 | 7.8 | 9.5 | 11.2 | 13.1 | 15.1 | 17.3 | 19.5 |
| kg | 18500 | 13600 | 10300 | 8200 | 6800 | 5700 | 4850 | 4200 | 3700 |

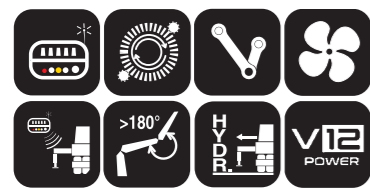
E-9

| | | | | | | | | | | |
|----|-------|-------|-------|------|------|------|------|------|------|------|
| m | 4.6 | 6.1 | 7.8 | 9.5 | 11.2 | 13.1 | 15.2 | 17.4 | 19.6 | 21.8 |
| kg | 18200 | 13400 | 10100 | 8000 | 6600 | 5500 | 4600 | 3950 | 3450 | 3100 |

E-10

| | | | | | | | | | | | |
|----|-------|-------|------|------|------|------|------|------|------|------|------|
| m | 4.7 | 6.2 | 7.9 | 9.6 | 11.3 | 13.2 | 15.3 | 17.5 | 19.7 | 21.9 | 23.9 |
| kg | 17800 | 13100 | 9800 | 7800 | 6400 | 5300 | 4400 | 3750 | 3250 | 2900 | 2650 |

standard



| MODEL | txm | (°) | mm | mm | mm |
|-------|-------|-----|------|------|------|
| E-8 | 85,10 | ∞ | 2507 | 1263 | 1817 |
| E-9 | 84,10 | ∞ | 2507 | 1263 | 1847 |
| E-10 | 83,60 | ∞ | 2507 | 1263 | 1847 |

E-8 Jib 155 Q-6

| | | | | | | | | |
|----|------|------|------|------|------|------|------|------|
| m | 22.7 | 24.0 | 25.5 | 27.0 | 28.6 | 30.3 | 32.1 | 33.9 |
| kg | 2060 | 1900 | 1760 | 1640 | 1340 | 1080 | 920 | 760 |

E-9 Jib 155 Q-6

| | | | | | | | | |
|----|------|------|------|------|------|------|------|------|
| m | 24.9 | 26.3 | 27.8 | 29.3 | 30.9 | 32.6 | 34.4 | 36.2 |
| kg | 1560 | 1440 | 1340 | 1240 | 1020 | 820 | 690 | 560 |

| | | | | | | | | |
|----|------|------|------|------|------|------|-----|-----|
| m | XX | XX | XX | XX | XX | XX | XX | XX |
| kg | 1840 | 1700 | 1580 | 1460 | 1340 | 1080 | 920 | 760 |

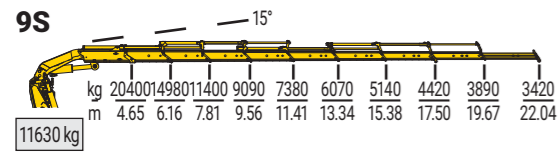
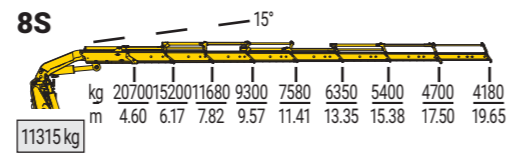
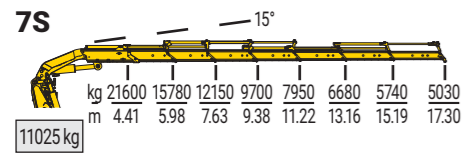
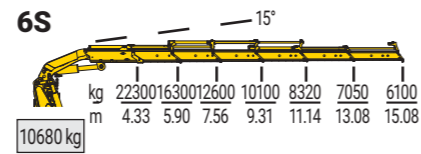
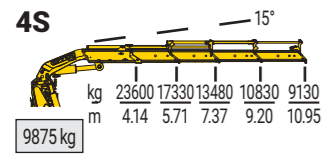
optional



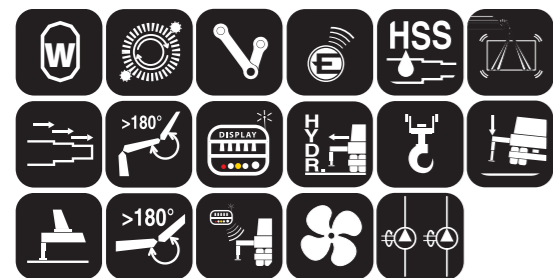
| MODEL | txm | (°) | mm | mm | mm |
|---------------|-------|-----|------|------|------|
| E-8 J 155 Q-6 | 85,10 | ∞ | 2730 | 1263 | 2005 |
| E-9 J 155 Q-6 | 84,10 | ∞ | 2730 | 1263 | 2095 |



1405

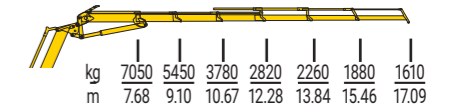
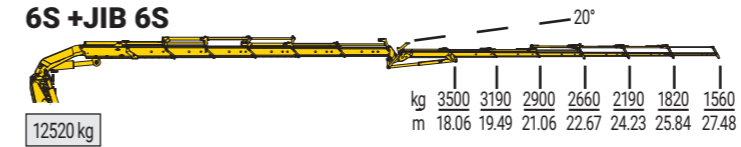


standard

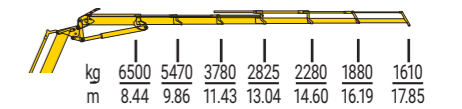
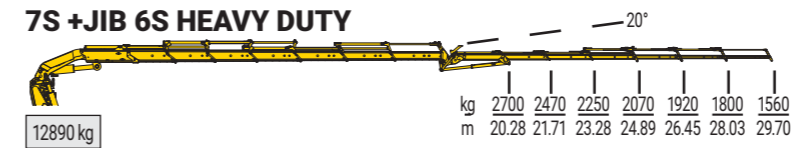


| MODEL | | | | | | | | | |
|-------|--------|-----|------|------|------|-------|----|----|----|
| | txm | (°) | mm | mm | mm | mm | mm | mm | t |
| 4S | 100.00 | ∞ | 2560 | 2550 | 2390 | 10100 | | | 32 |
| 6S | 96.60 | ∞ | 2560 | 2550 | 2390 | 10100 | | | 32 |
| 7S | 95.19 | ∞ | 2560 | 2550 | 2390 | 10100 | | | 32 |
| 8S | 95.13 | ∞ | 2560 | 2550 | 2390 | 10100 | | | 32 |
| 9S | 94.77 | ∞ | 2560 | 2550 | 2490 | 10100 | | | 32 |

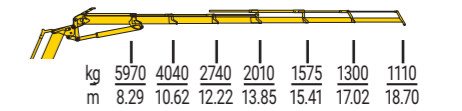
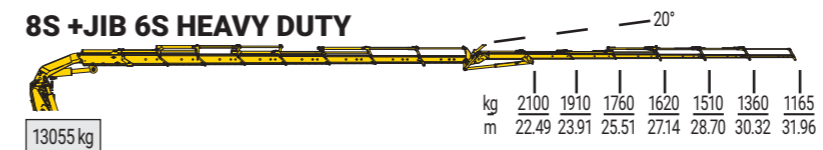
6S + JIB 6S



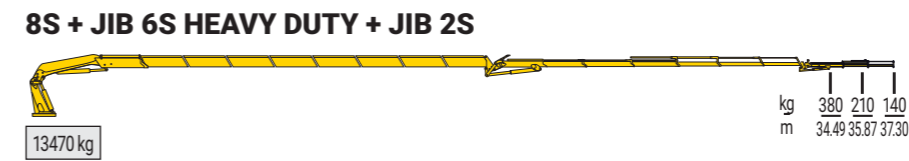
7S + JIB 6S HEAVY DUTY



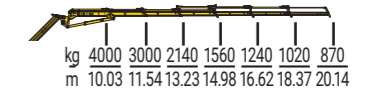
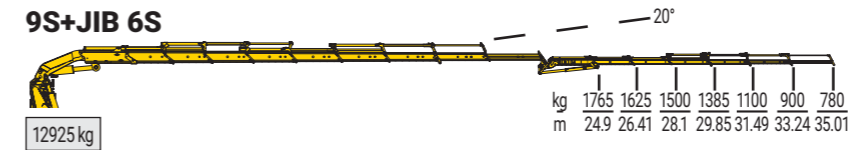
8S + JIB 6S HEAVY DUTY



8S + JIB 6S HEAVY DUTY + JIB 2S



9S + JIB 6S



optional

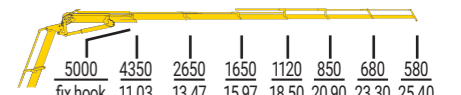
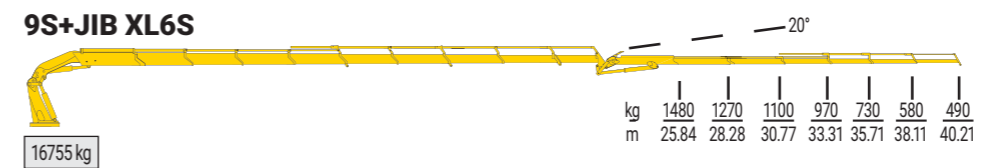
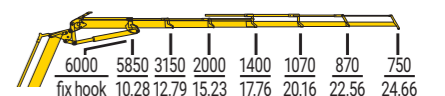
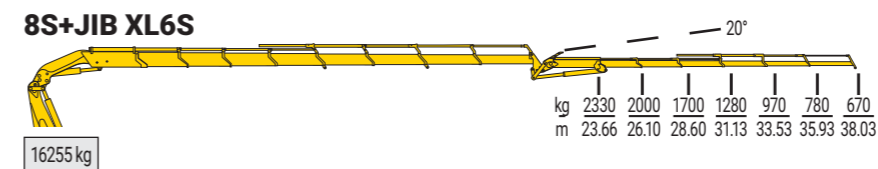
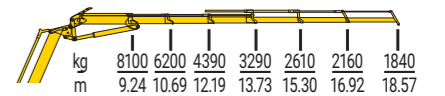
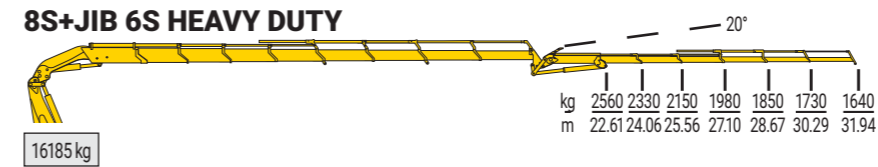
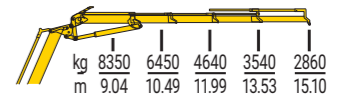
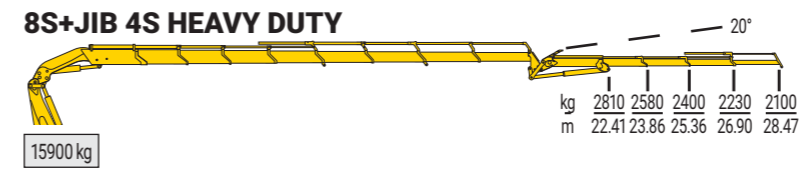
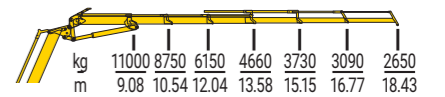
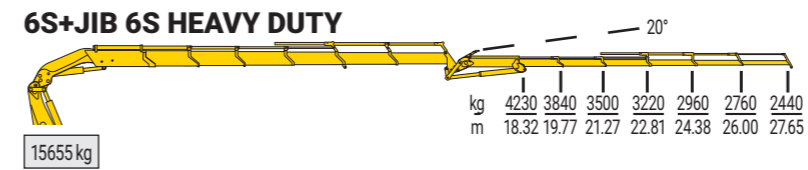
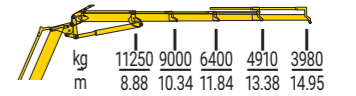
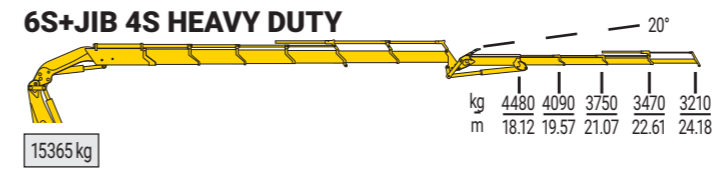
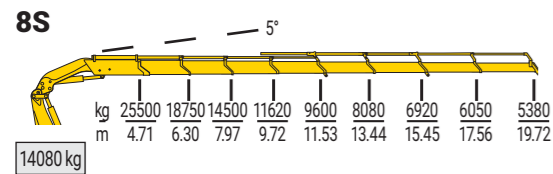
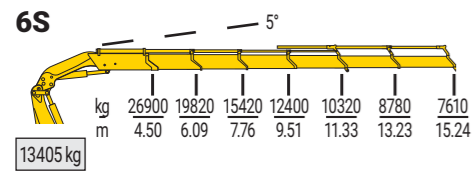
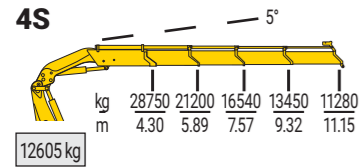


| MODEL | | | | | | | | | |
|---------------------|-------|-----|------|------|------|-------|----|----|----|
| | txm | (°) | mm | mm | mm | mm | mm | mm | t |
| 6S+JIB 6S | 96.60 | ∞ | 2780 | 2550 | 2560 | 10100 | | | 32 |
| 7S+JIB 6S HD | 95.19 | ∞ | 2780 | 2550 | 2560 | 10100 | | | 32 |
| 8S+JIB 6S HD | 95.13 | ∞ | 2780 | 2550 | 2560 | 10100 | | | 32 |
| 8S+JIB 6S HD+JIB 2S | 95.13 | ∞ | - | - | * | 10100 | | | 32 |
| 9S + JIB 6S | 94.77 | ∞ | 2780 | 2550 | 2595 | 10100 | | | 32 |

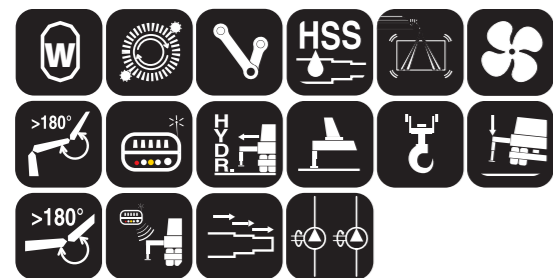
* not foldable / non ripiegabile



1750



standard



| MODEL | | | | | | | |
|-------|--------|-----|------|------|------|-------|----|
| | txm | (°) | mm | mm | mm | mm | t |
| 4S | 125.80 | ∞ | 2650 | 2550 | 2600 | 10100 | 32 |
| 6S | 121.20 | ∞ | 2650 | 2550 | 2600 | 10100 | 32 |
| 8S | 120.10 | ∞ | 2650 | 2550 | 2600 | 10100 | 32 |

optional

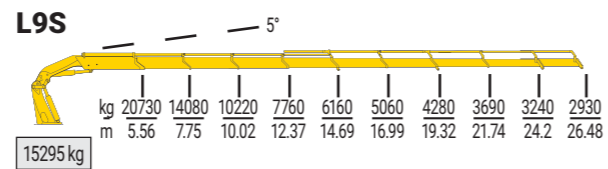
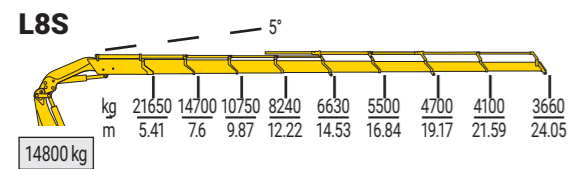


* not foldable / non ripiegabile

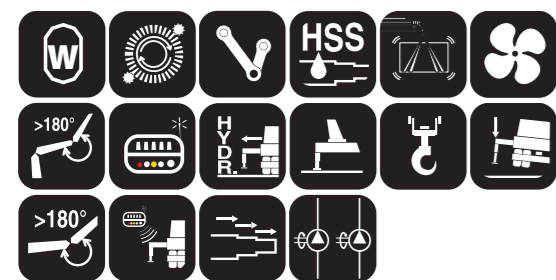
| MODEL | | | | | | | |
|--------------|--------|-----|------|------|-------|-------|----|
| | txm | (°) | mm | mm | mm | mm | t |
| 6S+JIB 4S HD | 121.20 | ∞ | 2900 | 2550 | 2825 | 10100 | 32 |
| 6S+JIB 6S HD | 121.20 | ∞ | 2900 | 2550 | 2825 | 10100 | 32 |
| 8S+JIB 4S HD | 121.20 | ∞ | 2900 | 2550 | 2825 | 10100 | 32 |
| 8S+JIB 6S HD | 120.10 | ∞ | 2900 | 2550 | 2825 | 10100 | 32 |
| 8S+JIB XL6S | 120.10 | ∞ | 2900 | 2550 | 2825 | 10100 | 32 |
| 9S+JIB XL6S | 117.71 | ∞ | 2950 | 2550 | 6880* | 10100 | 32 |



1750 L

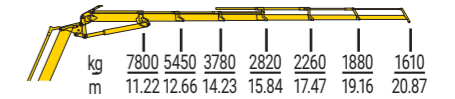
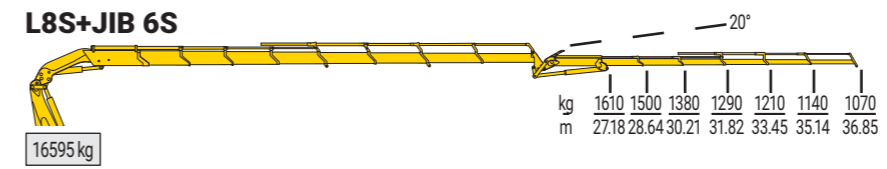


standard

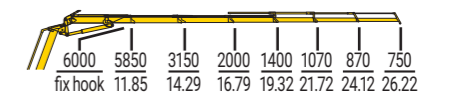
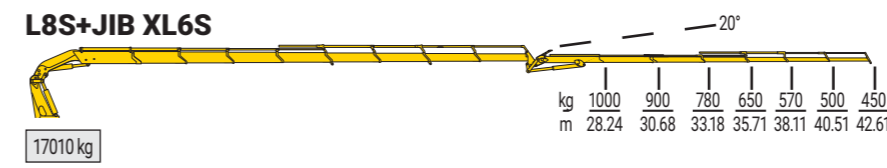


| MODEL | txm | (°) | mm | mm | mm | mm | t |
|-------|--------|-----|------|------|------|-------|----|
| L8S | 117.15 | ∞ | 2785 | 2550 | 4115 | 10100 | 32 |
| L9S | 115.26 | ∞ | 2875 | 2550 | 4115 | 10100 | 32 |

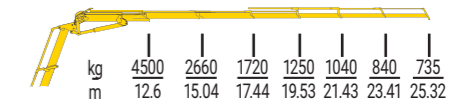
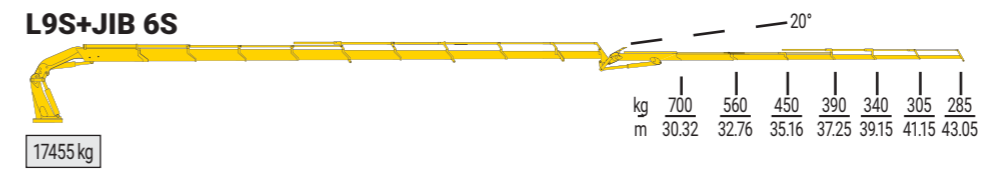
L8S+JIB 6S



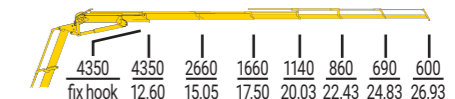
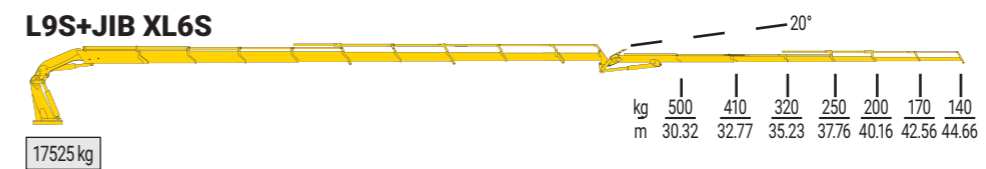
L8S+JIB XL6S



L9S+JIB 6S



L9S+JIB XL6S



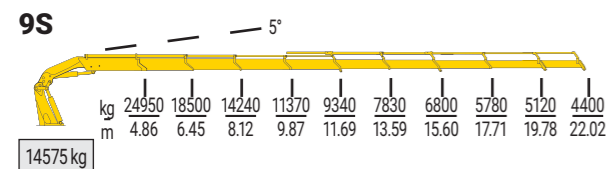
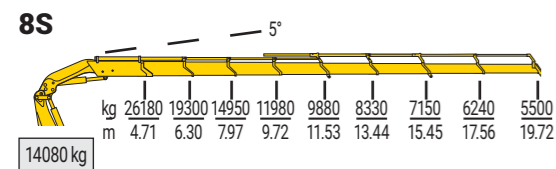
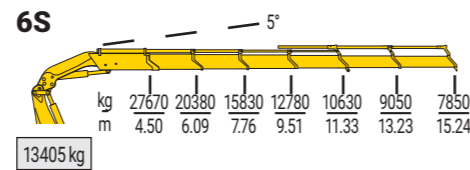
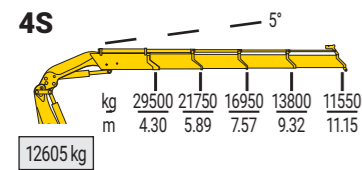
optional



| MODEL | txm | (°) | mm | mm | mm | mm | t |
|--------------|--------|-----|------|------|------|-------|----|
| L8S+JIB 6S | 117.15 | ∞ | 2875 | 2550 | 4115 | 10100 | 32 |
| L8S+JIB XL6S | 117.15 | ∞ | 2875 | 2550 | 4115 | 10100 | 32 |
| L9S+JIB 6S | 115.26 | ∞ | 2875 | 2550 | 4115 | 10100 | 32 |
| L9S+JIB XL6S | 115.26 | ∞ | 2875 | 2550 | 4115 | 10100 | 32 |



1855

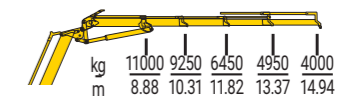
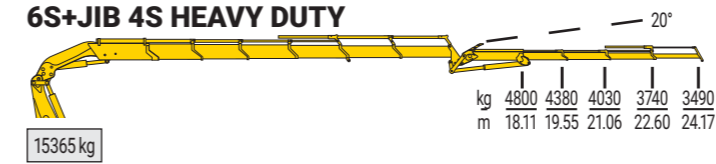


standard

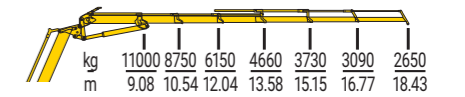
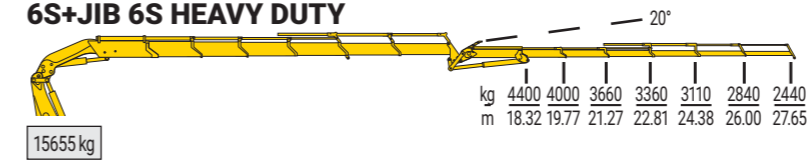


| MODEL | | | | | | | |
|--------------|--------|-----|------|------|------|-------|----|
| | txm | (°) | mm | mm | mm | mm | t |
| 4S | 129.23 | ∞ | 2650 | 2550 | 2600 | 10100 | 32 |
| 6S | 124.66 | ∞ | 2650 | 2550 | 2600 | 10100 | 32 |
| 8S | 123.31 | ∞ | 2650 | 2550 | 2600 | 10100 | 32 |
| 9S | 121.36 | ∞ | 2650 | 2550 | 2700 | 10100 | 32 |
| 6S+JIB 4S HD | 124.66 | ∞ | 2900 | 2550 | 2825 | 10100 | 32 |
| 6S+JIB 6S HD | 124.66 | ∞ | 2900 | 2550 | 2825 | 10100 | 32 |

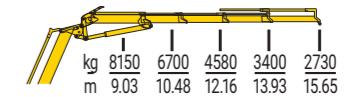
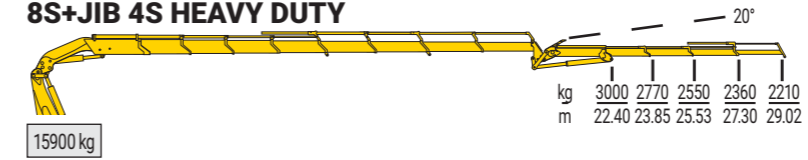
6S+JIB 4S HEAVY DUTY



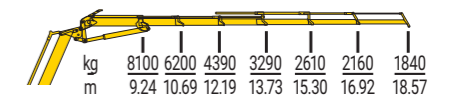
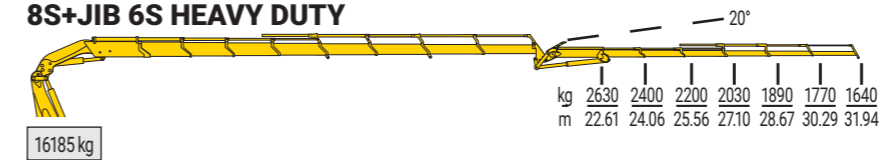
6S+JIB 6S HEAVY DUTY



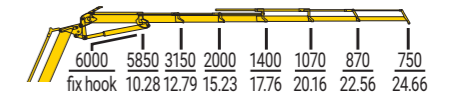
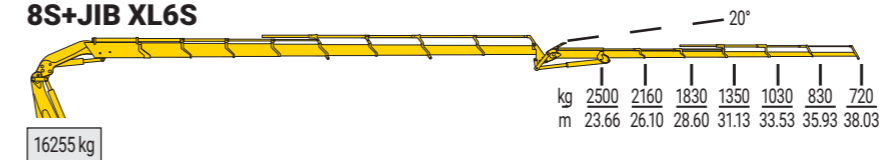
8S+JIB 4S HEAVY DUTY



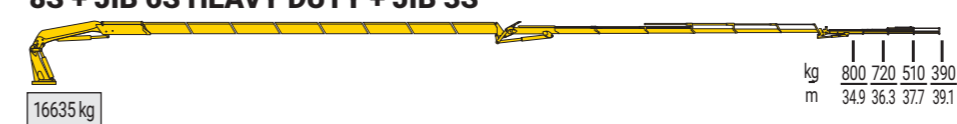
8S+JIB 6S HEAVY DUTY



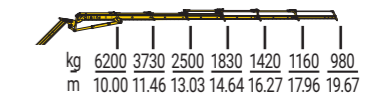
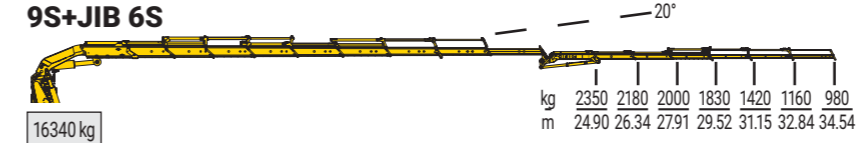
8S+JIB XL6S



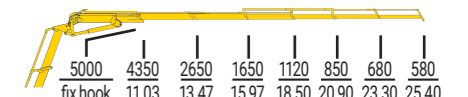
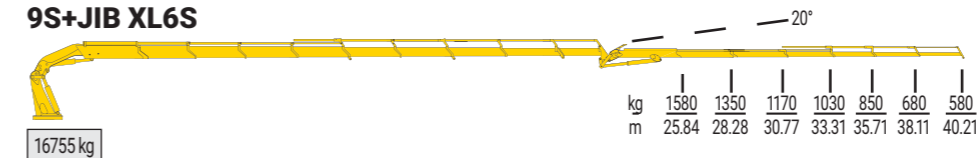
8S + JIB 6S HEAVY DUTY + JIB 3S



9S+JIB 6S



9S+JIB XL6S



optional

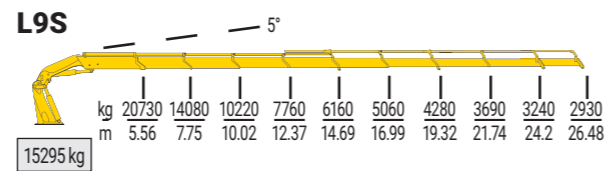
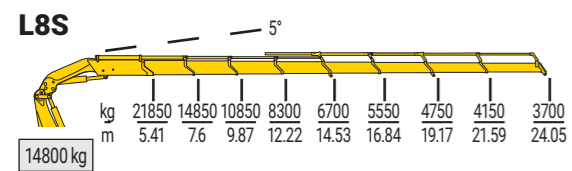


* not foldable / non ripiegabile

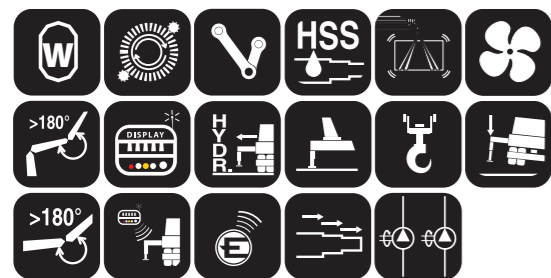
| MODEL | | | | | | | |
|---------------------|--------|-----|------|------|-------|-------|----|
| | txm | (°) | mm | mm | mm | mm | t |
| 8S+JIB 4S HD | 123.31 | ∞ | 2900 | 2550 | 2825 | 10100 | 32 |
| 8S+JIB 6S HD | 123.31 | ∞ | 2900 | 2550 | 2825 | 10100 | 32 |
| 8S+JIB XL6S | 123.31 | ∞ | 2900 | - | 6880* | 10100 | 32 |
| 8S+JIB 6S HD+JIB 3S | 123.31 | ∞ | - | - | * | 10100 | 32 |
| 9S+JIB 6S | 121.36 | ∞ | 2900 | 2570 | 2825 | 10100 | 32 |
| 9S+JIB XL6S | 121.36 | ∞ | 2950 | - | 6880* | 10100 | 32 |



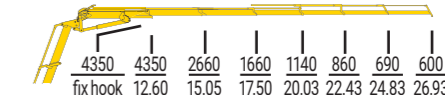
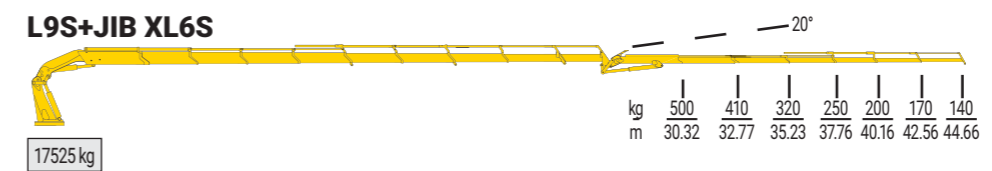
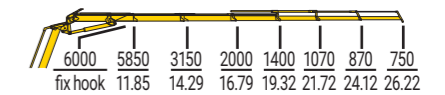
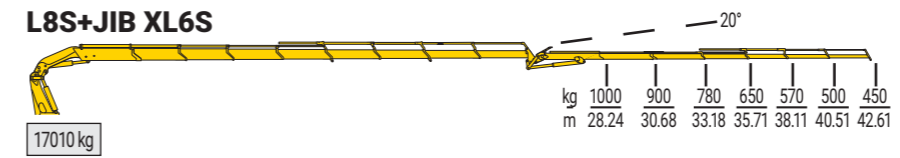
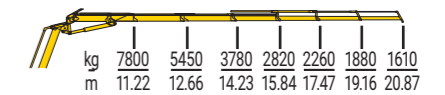
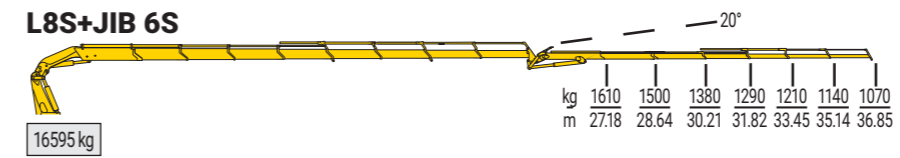
1855 L



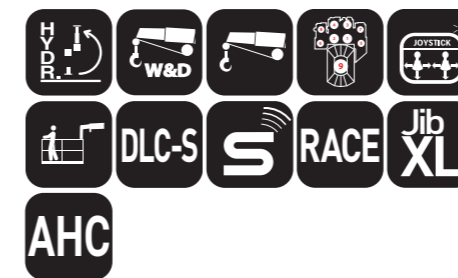
standard



| MODEL | | | | | | | | |
|-------|--------|-----|------|------|------|-------|----|---|
| | txm | (°) | mm | mm | mm | mm | mm | t |
| L8S | 117.15 | ∞ | 2785 | 2550 | 4115 | 10100 | 32 | |
| L9S | 115.26 | ∞ | 2875 | 2550 | 4115 | 10100 | 32 | |



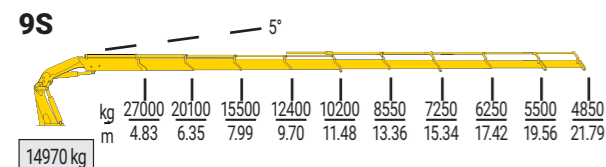
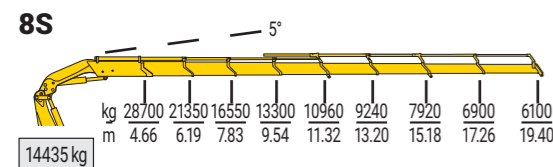
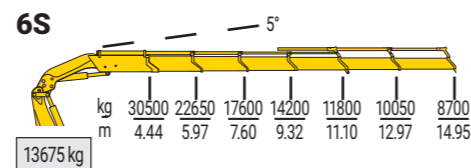
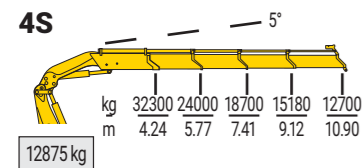
optional



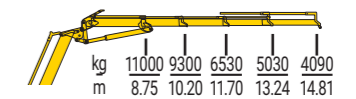
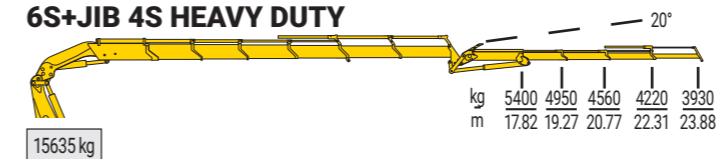
| MODEL | | | | | | | | |
|--------------|--------|-----|------|------|------|-------|----|---|
| | txm | (°) | mm | mm | mm | mm | mm | t |
| L8S+JIB 6S | 117.15 | ∞ | 2875 | 2550 | 4115 | 10100 | 32 | |
| L8S+JIB XL6S | 117.15 | ∞ | 2875 | 2550 | 4115 | 10100 | 32 | |
| L9S+JIB XL6S | 115.26 | ∞ | 2875 | 2550 | 4115 | 10100 | 32 | |



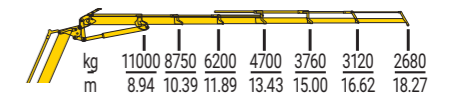
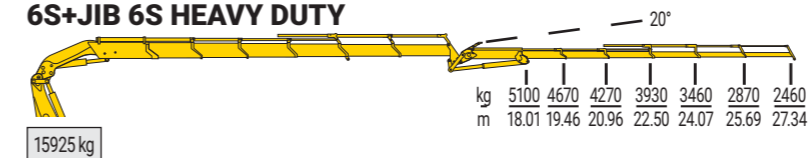
2055



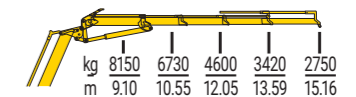
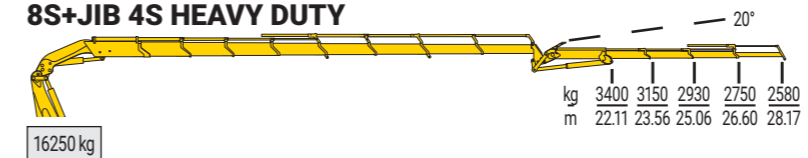
6S+JIB 4S HEAVY DUTY



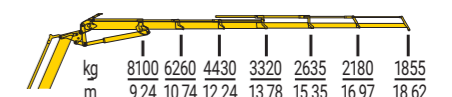
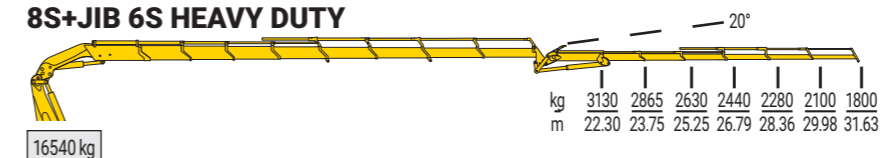
6S+JIB 6S HEAVY DUTY



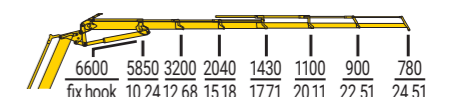
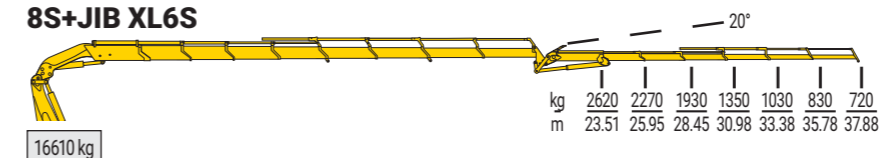
8S+JIB 4S HEAVY DUTY



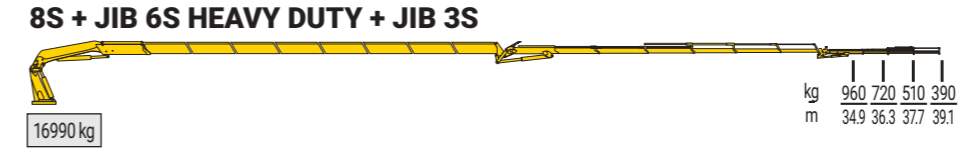
8S+JIB 6S HEAVY DUTY



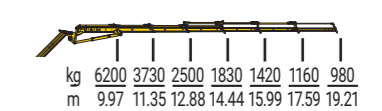
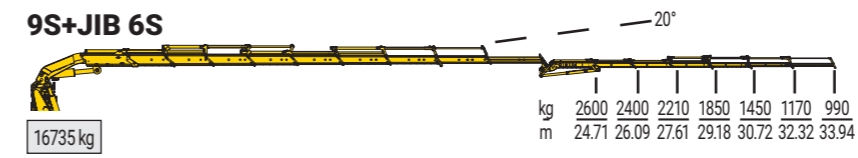
8S+JIB XL6S



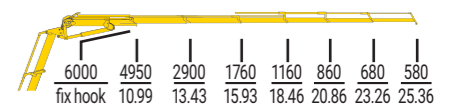
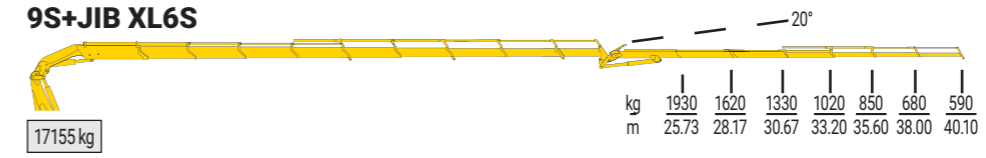
8S + JIB 6S HEAVY DUTY + JIB 3S



9S+JIB 6S



9S+JIB XL6S



standard



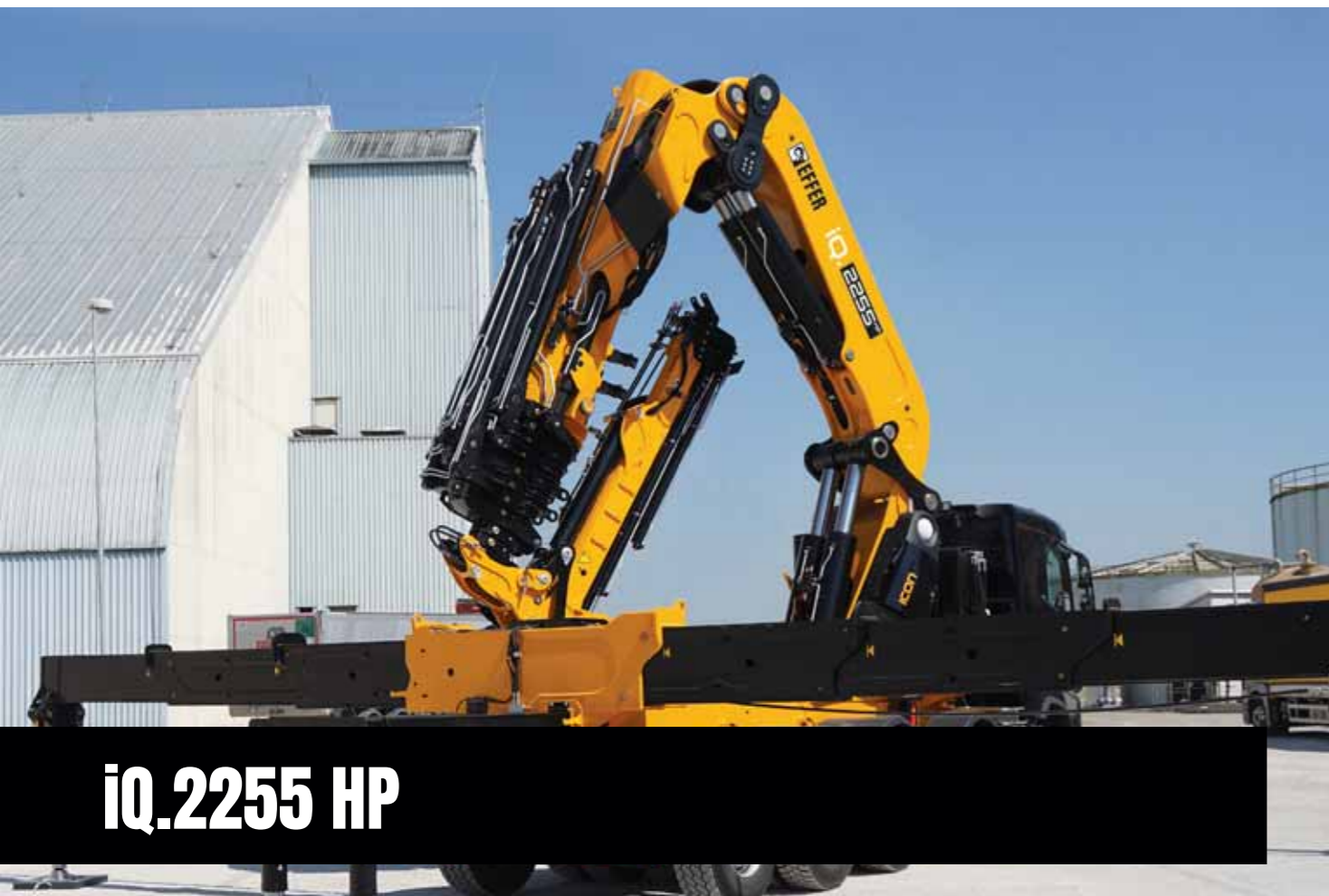
| MODEL | | | | | | | |
|--------------|--------|-----|------|------|------|-------|----|
| | txm | (°) | mm | mm | mm | mm | t |
| 4S | 138.48 | ∞ | 2700 | 2550 | 2870 | 10100 | 32 |
| 6S | 135.40 | ∞ | 2700 | 2550 | 2870 | 10100 | 32 |
| 8S | 133.86 | ∞ | 2700 | 2550 | 2870 | 10100 | 32 |
| 9S | 130.28 | ∞ | 2700 | 2550 | 2870 | 10100 | 32 |
| 6S+JIB 4S HD | 135.40 | ∞ | 2870 | 2550 | 2990 | 10100 | 32 |
| 6S+JIB 6S HD | 135.40 | ∞ | 2870 | 2550 | 2990 | 10100 | 32 |

optional

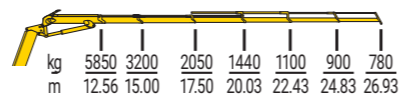
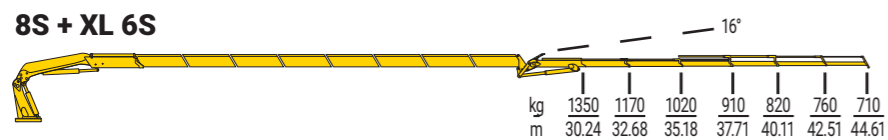
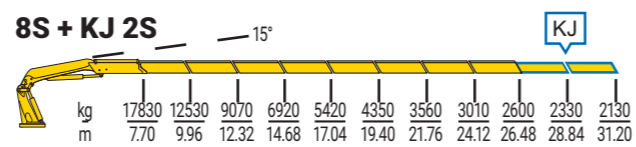
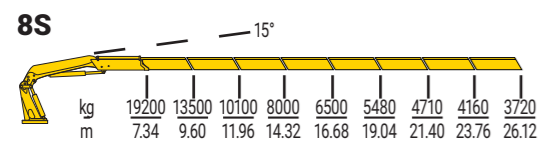


| MODEL | | | | | | | |
|---------------------|--------|-----|------|------|-------|-------|----|
| | txm | (°) | mm | mm | mm | mm | t |
| 8S+JIB 4S HD | 133.86 | ∞ | 2870 | 2550 | 2990 | 10100 | 32 |
| 8S+JIB 6S HD | 133.86 | ∞ | 2870 | 2550 | 2990 | 10100 | 32 |
| 8S+JIB XL6S | 133.86 | ∞ | 2870 | 2550 | 2990 | 10100 | 32 |
| 8S+JIB 6S HD+JIB 3S | 133.86 | ∞ | - | - | * | 10100 | 32 |
| 9S+JIB 6S | 130.28 | ∞ | 2865 | 2570 | 3030 | 10100 | 32 |
| 9S+JIB XL6S | 130.28 | ∞ | 2950 | 2550 | 6880* | 10100 | 32 |

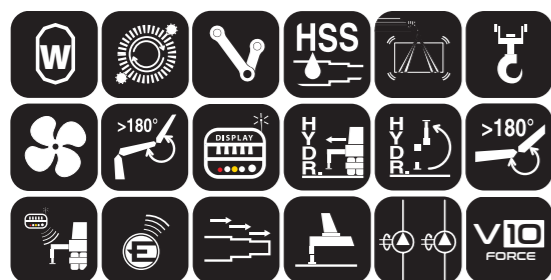
* not foldable / non ripiegabile



iQ.2255 HP



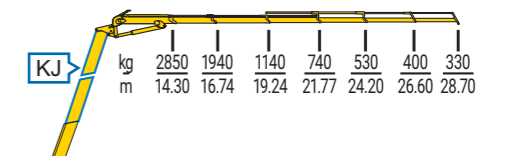
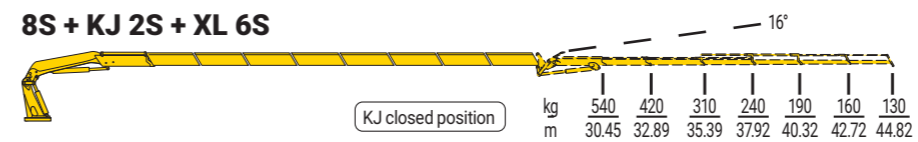
standard



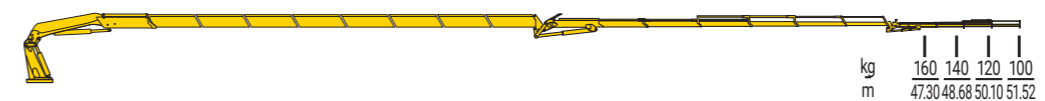
SPACE evo

| MODEL | txm | (°) | t |
|------------|-----|-----|----|
| 8S | 141 | ∞ | 40 |
| 8S + KJ 2S | 141 | ∞ | 40 |
| 8S + XL 6S | 141 | ∞ | 40 |

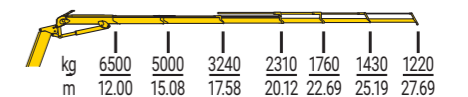
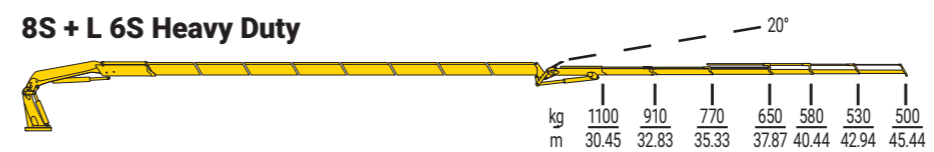
8S + KJ 2S + XL 6S



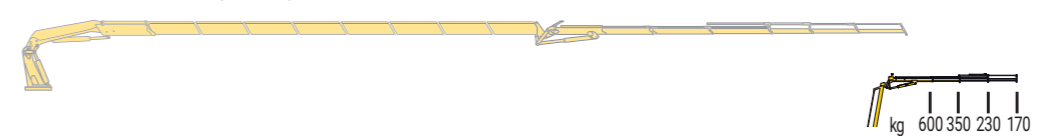
8S + XL 6S + 3S



8S + L 6S Heavy Duty



8S + L 6S Heavy Duty + 3S



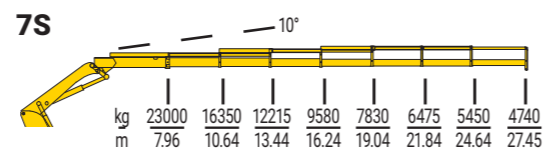
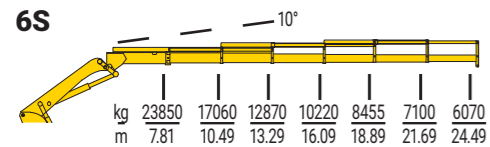
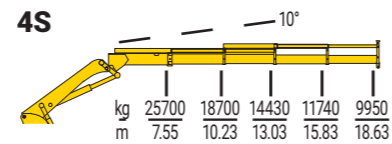
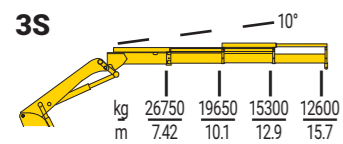
optional



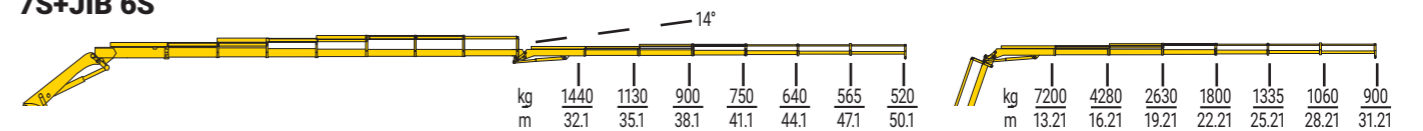
| MODEL | txm | (°) | t |
|--------------------|-----|-----|----|
| 8S + KJ 2S + XL 6S | 141 | ∞ | 40 |
| 8S + XL 6S + 3S | 141 | ∞ | 40 |
| 8S + L 6S HD | 141 | ∞ | 40 |
| 8S + L 6S HD + 3S | 141 | ∞ | 40 |



iQ.2655 HP



7S+JIB 6S



7S+JIB 6S+JIB 3S



standard












| MODEL | txm | (°) | t |
|-------|--------|-----|----|
| 3S | 198.48 | ∞ | 50 |
| 4S | 194.03 | ∞ | 50 |
| 6S | 186.27 | ∞ | 50 |
| 7S | 183.08 | ∞ | 50 |

optional









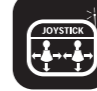





| MODEL | txm | (°) | t |
|----------------------|--------|-----|----|
| 7S + JIB 6S | 183.08 | ∞ | 50 |
| 7S + JIB 6S + JIB 3S | 183.08 | ∞ | 50 |

LEGENDA KEY

-  Hexagonal boom profile.
Bracci a profilo esagonale.
Brazos de perfil hexagonal.
Bras avec profil hexagonal.
Ausleger mit sechskantigem Profil.
-  Decagonal boom profile.
Bracci a profilo decagonale.
Brazos de perfil decagonal.
Bras avec profil décagonal.
Ausleger mit dekagonalem Profil.
-  Radio remote control.
Radiocomando.
Control remoto por radio.
Radiocommande.
Funksteuerung.
-  Rack and pinion.
Rotazione a cremagliera.
Giro por cremallera.
Rotation par crémaillère.
Schwenkung mittels Zahnstange.
-  Slewing ring and reduction gear unit.
Rotazione con ralla e motoriduttore.
Corona giratoria y unidad reductora por engranajes.
Rotation par couronne et motoréducteur.
Schwenkung mittels Drehkranz und Getriebe.
-  Additional reduction gear unit.
Doppio motoriduttore.
Grupo motorreductor adicional.
Double moto réducteur.
Schwenkmotor.
-  ETL (Effer Twin Links).
ETL (Effer Twin Links) Doppia biella.
ETL (Effer Twin Links) Doble biela.
ETL (Effer Twin Links).
Doppelkniehebel.
-  Integral subframe for compact mounting.
Basamento integrale per montaggi compatti.
Base integrada para montaje compacto.
Embase intégrale pour montage compact.
Integrierter Hilfsrahmen für kompakte Installationen.
-  Sequence valves.
Valvole di sequenza.
Válvulas de secuencia.
Valve séquentielle.
Sequenzventile.

-  CE mark.
Marchio CE.
Marca CE.
Marquage CE.
CE-Kennzeichnung.
-  Lifting moment.
Momento di sollevamento.
Momento de elevación.
Moment de levage.
Hubmoment.
-  Slewing angle.
Angolo di rotazione.
Ángulo de giro.
Rotation.
Drehwinkel.
-  Crane height.
Altezza della gru.
Altura de la grúa.
Hauteur de la grue.
Kranhohe.
-  Crane width.
Larghezza della gru.
Ancho de grúa.
Largeur de la grue.
Kranbreite.
-  Crane thickness.
Spessore gru.
Anchuraa de la grúa.
Epaisseur de la grue.
Krandicke.
-  Fly-jib articulating for more than 180°.
Sistema di articolazione del jib superiore a 180°.
Sistema de articulación del jib superior a 180°.
Système d'articulation du jib supérieur à 180°.
Zusatzgelenk über 180°.
-  Oil cooler.
Scambiatore di calore.
Enfriador de aceite.
Échangeur de chaleur.
Ölkühler.
-  Radio remote control with display.
Radiocomando con display.
Contro remoto con pantalla (display).
Radiocommande avec écran.
Funkfernsteuerung mit Anzeige.

-  Swing-up stabilizers, manually activated.
Variante girevole manuale.
Gatos estabilizadores giratorios de accionamiento manual.
Relevage manuel des stabilisateurs.
Schwenkbare Abstützzylinder mit manuellem Antrieb.
-  30° manual swing-up device.
Variante girevole manuale 30° gradi.
Giratorio manual de 30°.
Relevage manuel 30° des stabilisateurs.
Schwenkbare Abstützzylinder mit 30° manuellem Antrieb.
-  Swing-up stabilizers, hydraulically activated.
Variante girevole idraulica.
Gatos estabilizadores giratorios de accionamiento hidráulico.
Relevage hydraulique des stabilisateurs.
Schwenkbare Abstützzylinder mit hydraulischem Antrieb.
-  Stabilizers with manual outlet.
Uscita stabilizzatori manuale.
Extensión manual del estabilizador.
Sortie manuelle stabilisateurs.
Abstützungen mit manuellem Hub.
-  Stabilizers with hydraulic outlet.
Uscita stabilizzatori idraulica.
Gatos estabilizadores con extensión hidráulica.
Sortie hydraulique des stabilisateurs.
Abstützungen mit hydraulischem Hub.
-  "Grip & Swing" - Hook on bearing with cardan.
"Grip & Swing" - Gancio con cuscinetto e cardano.
"Grip & Swing" - Gancho con cojinete.
"Grip & Swing" - Crochet avec roulement et cardan.
"Grip & Swing" - Haken mit Lagern und Kardangelenken.
-  Winch.
Verricello.
Cabrestante.
Treuil.
Seilwinde.
-  Outer boom articulating for more than 180°.
Articolazione del braccio superiore a 180°.
Articulación del brazo superior a 180°.
Articulation du bras supérieure à 180°.
Gelenkpunkt über 180° des Knickarmes.
-  Stabilizer width.
Larghezza stabilizzatori.
Anchura estabilizador.
Largeur stabs.
Abstützbreite.

-  Min GVW for crane installation.
PTT min.
Min. MMA para instalacion de grúa.
Poids brut minimal du véhicule pour installation de la grue.
Mind. Gesamtgewicht des Fahrzeugs für Kraneinbau.
-  PROGRESS.
-  Crane adjustment for crane equipped with basket (MEWP).
Adeguamento gru e snodo per PLE.
Grua con regulación para su equipación con cesta (MEWP).
Adaptation de la grue et de l'articulation pour nacelle.
Krananpassung für Kran mit Arbeitskorb ausgerüstet.
-  Radio remote with joystick.
Radiocomando con joystick.
Radiocomando con joystick.
Radiocommande avec joystick.
Funksteuerung mit joystick.
-  Radio remote for stabilizers.
Radiocomando per stabilizzatori.
Mando a distancia para estabilizadores.
Radiocommande pour stabilisateurs.
Funksteuerung für Abstützungen.
-  C Version.
Versione C.
Version C.
Version C - Bras court.
Version C.
-  Effer second JIB.
Secondo JIB Effer.
Effer segundo JIB.
Deuxième JIB.
Zweites zusatzgelenk.
-  Remote Assistance Control Effer.
-  Hydraulic extension with two extensions.
Prolunga idraulica a due sfili.
KJ.

All data is considered to be true at the time of issue. Product data, details and specifications might change, valid content is determined during the official ordering process.

Tutti i dati sono considerati veri al momento dell'emissione. I dati, i dettagli e le specifiche del prodotto possono cambiare, il contenuto valido è determinato durante il processo ufficiale di ordinazione.

Toutes les données sont considérées comme vraies au moment de l'émission. Les données, détails et spécifications du produit peuvent changer, le contenu valide est déterminé au cours du processus officiel de commande.

Todos los datos se consideran verdaderos en el momento de su emisión. Los datos del producto, los detalles y las especificaciones pueden cambiar, el contenido válido se determina durante el proceso de pedido oficial.

Alla uppgifter anses vara sanna vid tidpunkten för utfärdandet. Produktdata, detaljer och specifikationer kan ändras, giltigt innehåll fastställs under den officiella beställningsprocessen.

Alle Angaben gelten zum Zeitpunkt der Ausstellung als wahr. Produktdaten, Details und Spezifikationen können sich ändern, der gültige Inhalt wird während des offiziellen Bestellvorgangs festgelegt.

effer.com - hiab.com

EFFER is part of Hiab

